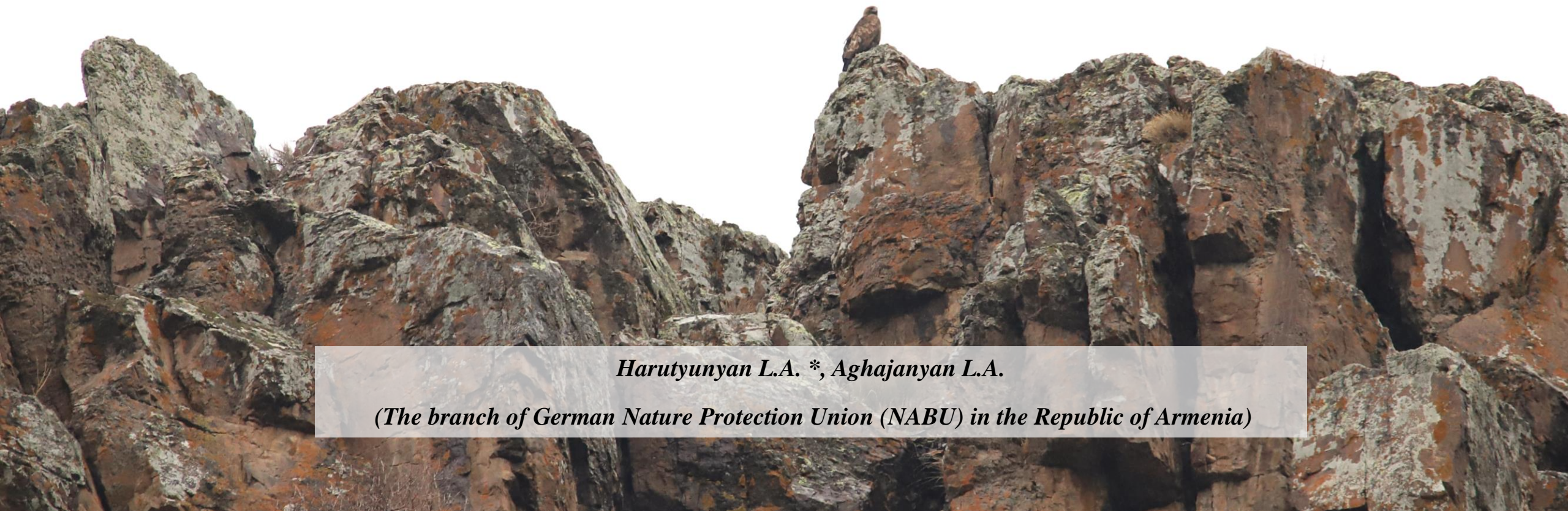


# PRELIMINARY FINDINGS INTO CURRENT STATE OF BREEDING POPULATION OF GOLDEN EAGLE (*AQUILA CHRYSAETOS*) IN ARMENIA



*Harutyunyan L.A. \*, Aghajanyan L.A.*

*(The branch of German Nature Protection Union (NABU) in the Republic of Armenia)*

# Birds of Prey Research and Conservation Project

Project is implemented since 2018.

**Aim: detect – map – monitor – study - id. threats – propose mitigation**

Target species:

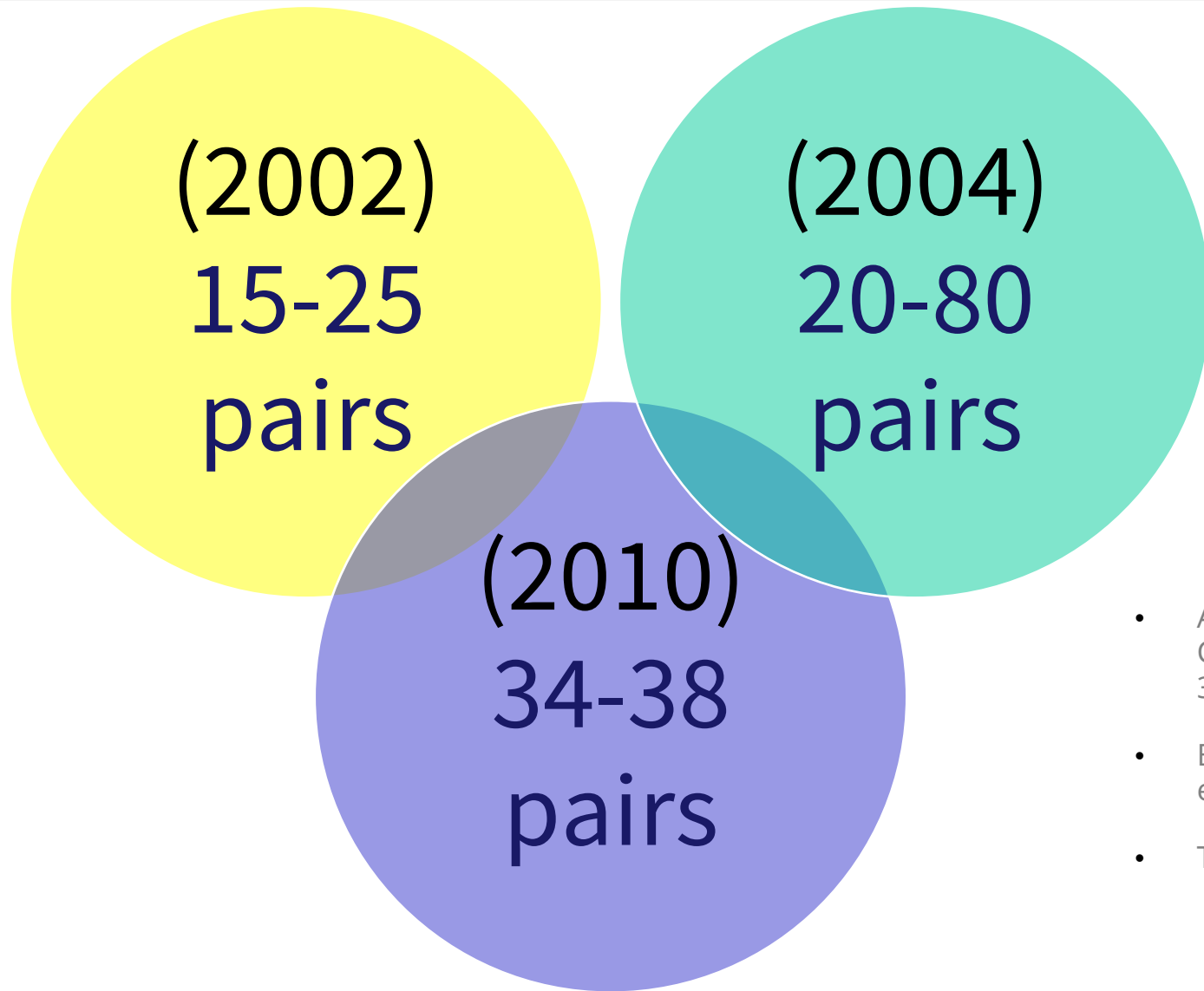
1. Egyptian vulture
2. Bearded vulture
3. Griffon vulture
4. Cinereous vulture
5. **Golden eagle**
6. Lesser-spotted eagle



- **Armenia** is a landlocked country in Lesser Caucasus (~ 29,743 km<sup>2</sup>)
- Mainly mountainous` 95% (avg. elevation ~1800)
- Provides good habitats for birds of prey
- In 2023 suitable breeding habitats of GE in **7 regions** of Armenia were studied

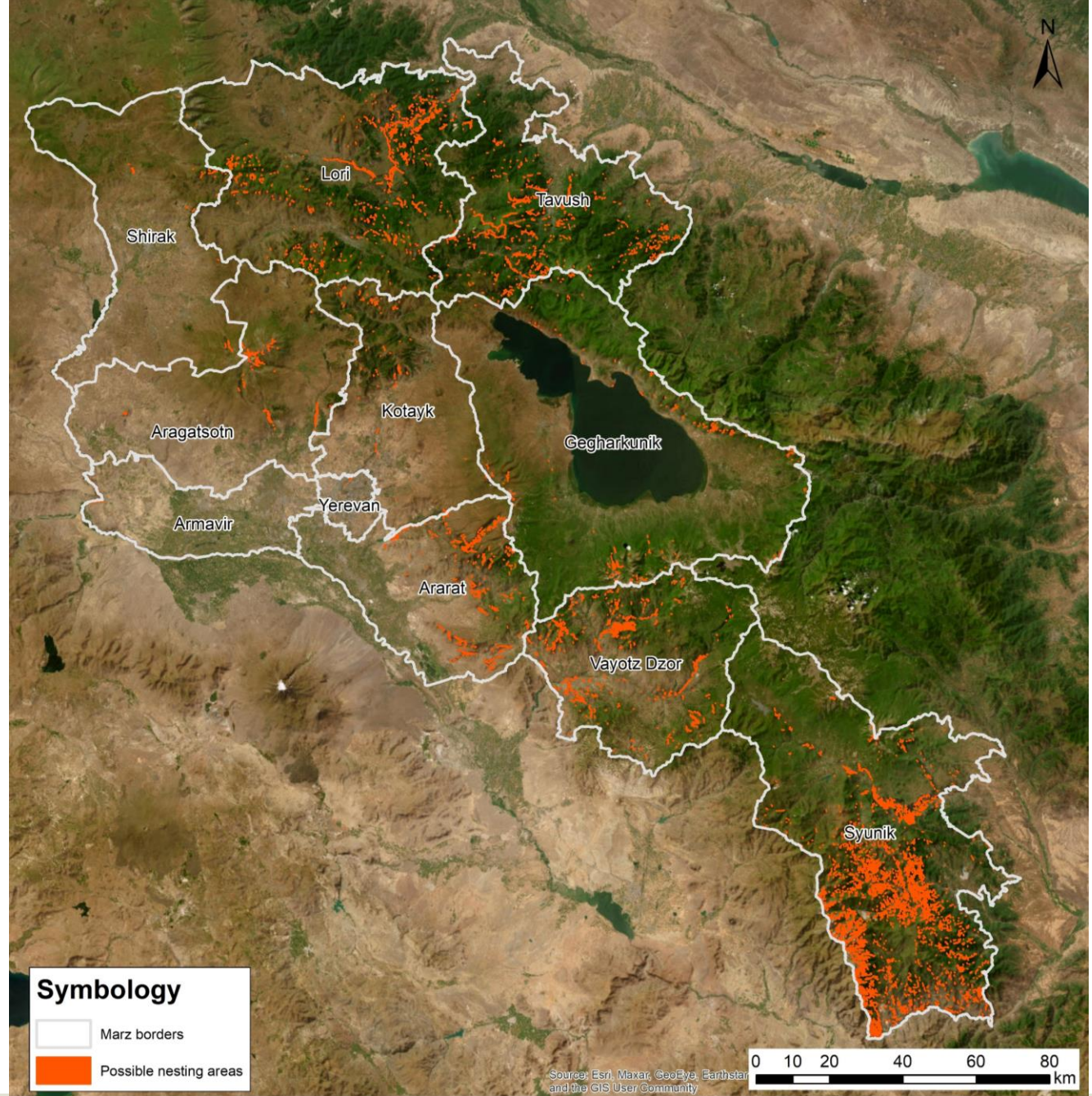


# GE population estimations in Armenia (*literature data*)

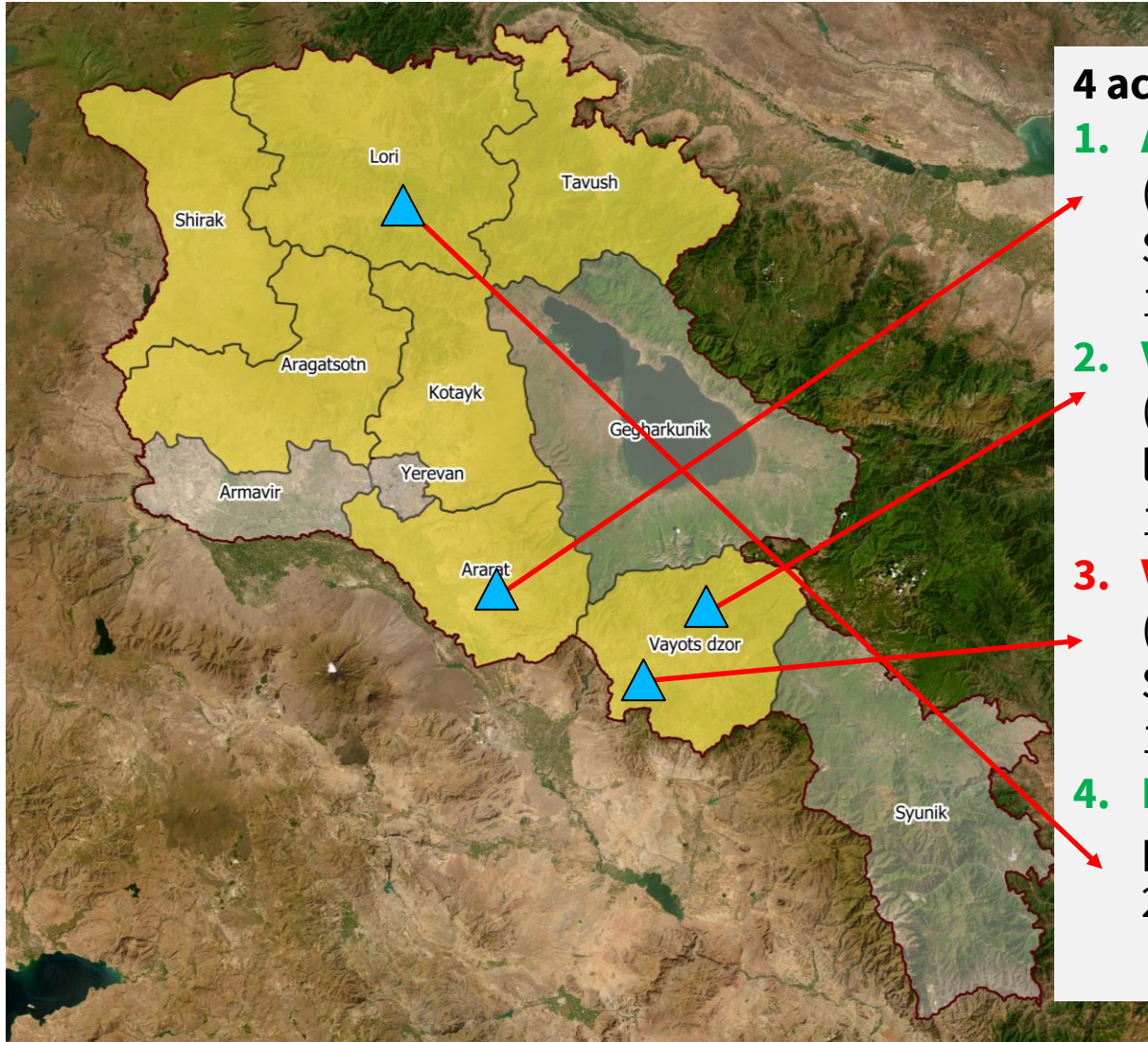


- Abuladze, A., and J. Shergalin. "The golden eagle in north Caucasia and Transcaucasia." *Journal of Raptor Research* 36.1 (2002): 10-17.
- BirdLife International (2004) *Birds in Europe: population estimates, trends and conservation status*.
- *The Red Book of Animals of the Republic of Armenia* (2010).

# Methods



# Results

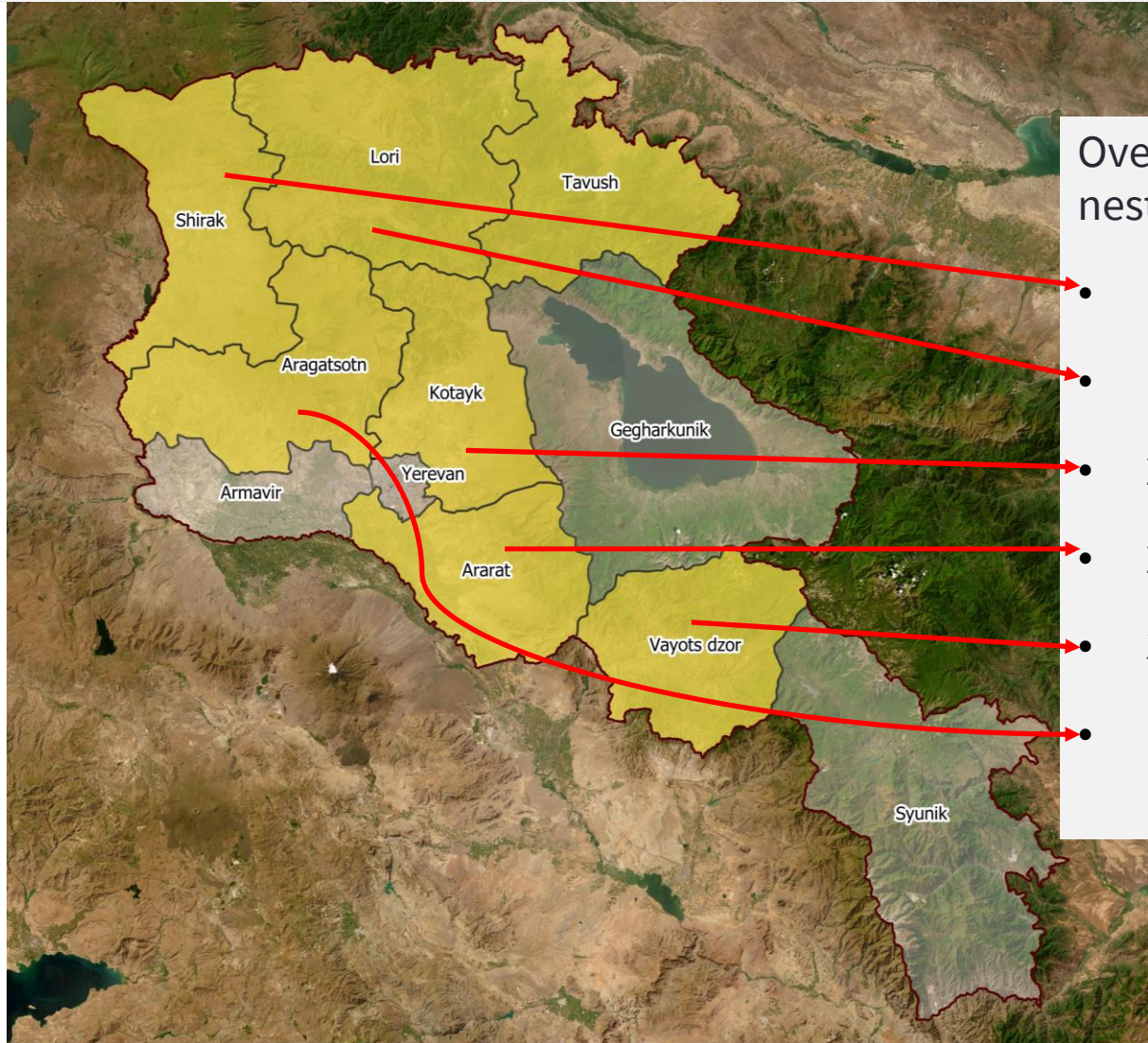


## 4 active nests

1. **Ararat region**  
("Khostrov forest"  
State reserve)  
1480 m asl
2. **Vayots dzor region**  
("Arpa" protected  
landscape)  
1700 m asl
3. **Vayots dzor region**  
(Near "Herher"  
State Sanctuary)  
1520 m asl
4. **Lori region** (out of  
protected areas)  
2170 m asl

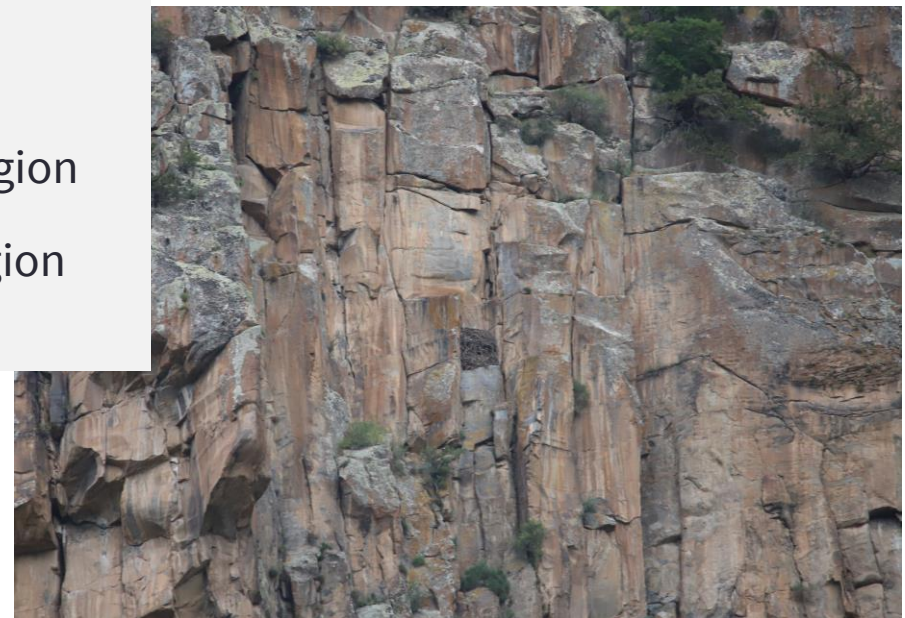


# Unoccupied nests



Overall **10 unoccupied** nest sites (20 nests)

- 1 Shirak region
- 1 Lori region
- 2 Kotayk region
- 2 Ararat region
- 3 Vayots dzor region
- 1 Aragatsotn region



# Satellite tagging

“Aquila” GPS/GSM satellite transmitter on rescued young Golden eagle





# Golden eagle tracking



# Threats to GE in Armenia

A large eagle is shown in flight, its wings spread wide, against a clear blue sky. The eagle's feathers are dark brown with some lighter patches on the wings. The eagle is positioned in the center of the frame, flying towards the left.

Included in the Red Book of Animals on RA as a “Vulnerable D1” sp.

- Direct persecution,
- Poaching and illegal egg/nestling collection,
- High anthropogenic disturbance,
- Poor control on pesticides used in agriculture ?



(Aquila chrysaetos)  
**Քարարծիվ**

Ներառված է ՀՀ կենդանիների Կարմիր գրքում  
Քարարծիվին վնասելն առաջացնում է վարչական  
և քրեական պատասխանատվություն



**Տարվա թռչուն 2023**

Պահպանեք հանուն Մարդու և Բնության

# Conservation activities

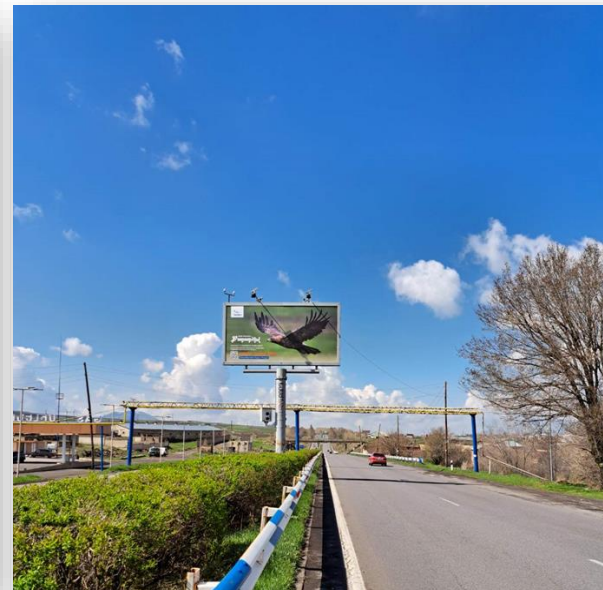
Seminars in Nature



Seminars with students



Billboards on the metro/roads



Caretakers initiative





Thank you

