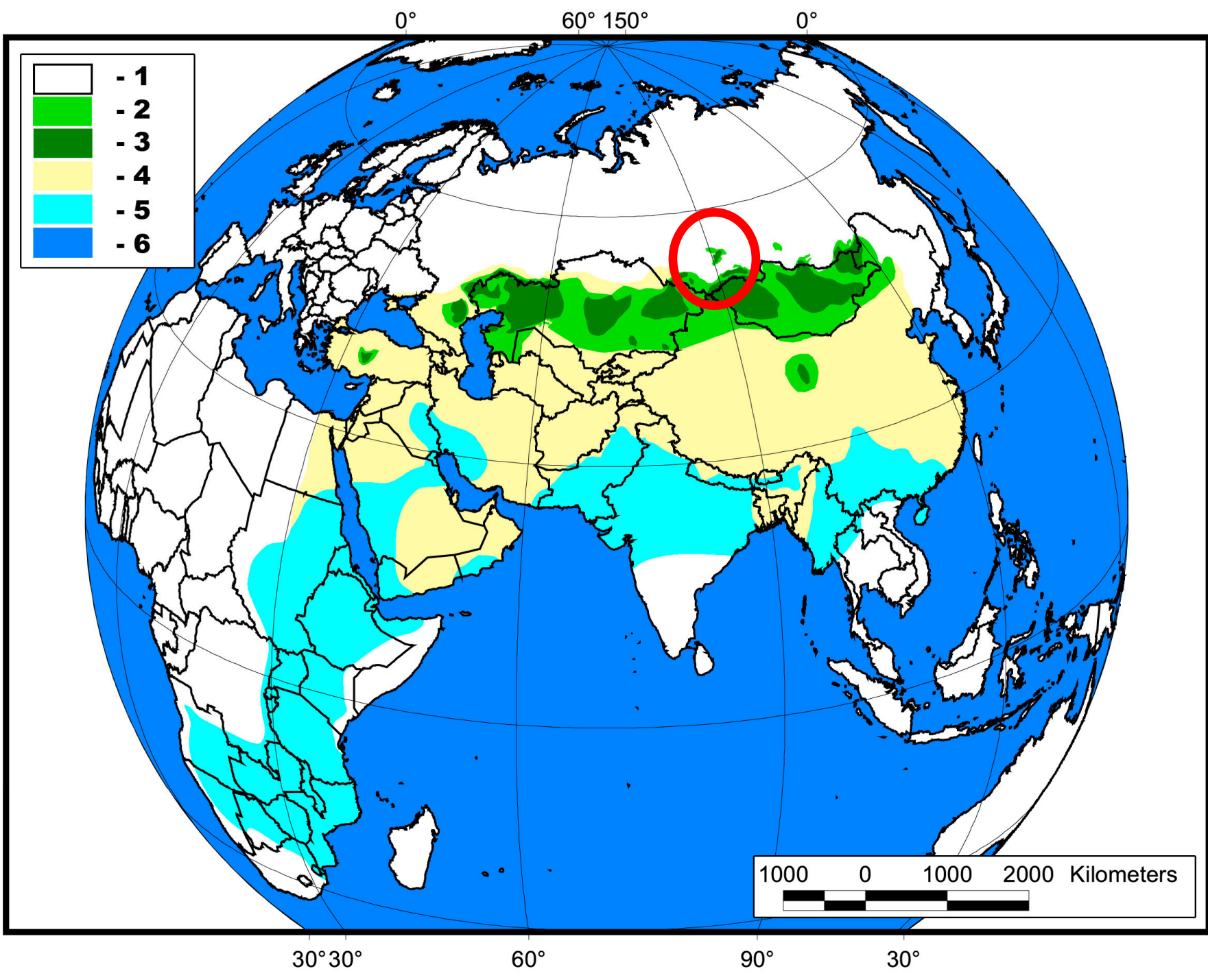




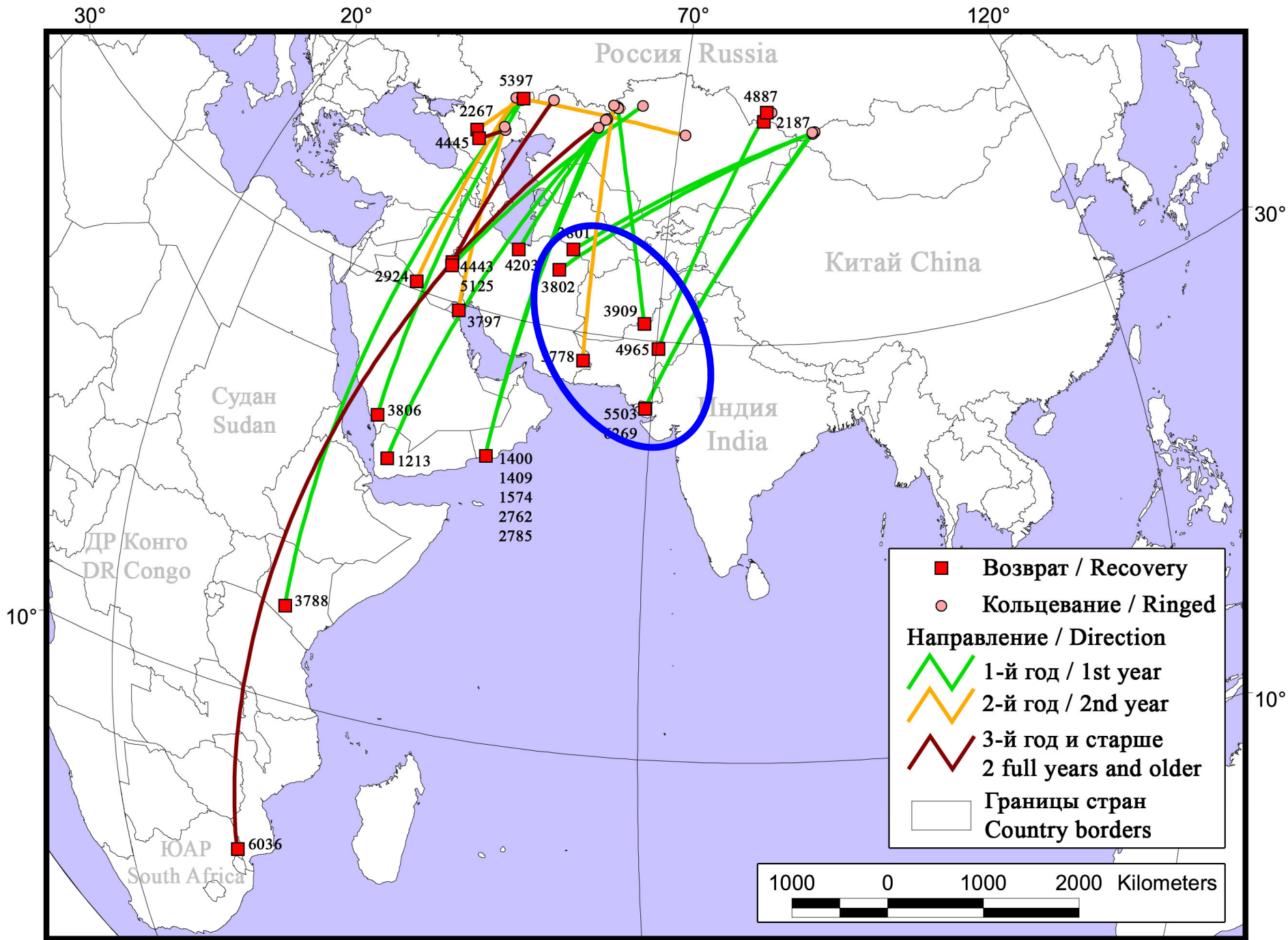
**Study of migrations of the Steppe Eagles
from the Altai-Sayan region**

Igor Karyakin, Elvira Nikolenko, Elena Shnayder, Kordian Bartoszuk

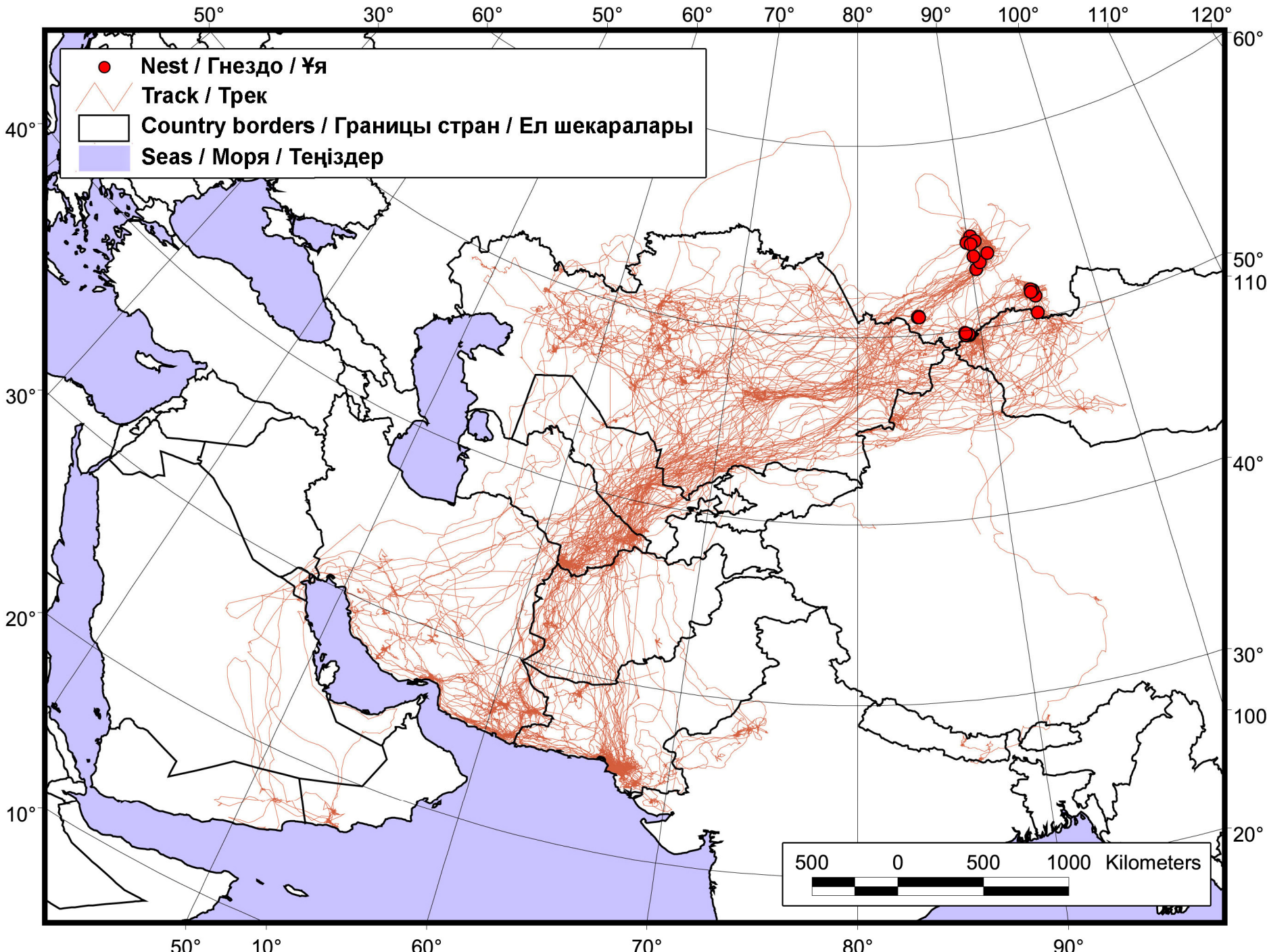












Karyakin I.V., Nikolenko E.G., Shnayder E.P., Zinevich L.S., Pulikova G.I., Bartoszek K., Horvath M., Juhász T., Aghababyan K., Andreenkova N.G. **Results of the GPS/GSM-Tracking of Juvenile Steppe Eagles from Russia and Kazakhstan.** – Raptors Conservation. 2019. 39: 71-227. [DOI: 10.19074/1814-8654-2019-39-71-227](https://doi.org/10.19074/1814-8654-2019-39-71-227)

Karyakin I.V., Nikolenko E.G., Shnayder E.P., Zinevich L.S., Pulikova G.I., Andreyenkova N.G., Bartoszek K., Horváth M., Juhász T., Prommer M. **Wind power development in Eastern Kazakhstan threatens migration of eagles.** – Raptors Conservation. 2021. 43: 108-213. DOI: [10.19074/1814-8654-2021-43-108-213](https://doi.org/10.19074/1814-8654-2021-43-108-213)

ISSN 1814-0076 eISSN 1814-8654

ПЕРНАТЫЕ ХИЩНИКИ **RAPTORS**
и их охрана conservation
39/2019

В этом выпуске:
In this issue:

Результаты прослеживания степных орлов с помощью GPS/GSM-трекеров
Results of the Tracking of Steppe Eagles Tagged with GPS/GSM Dataloggers

ISSN 1814-0076 eISSN 1814-8654

ПЕРНАТЫЕ ХИЩНИКИ **RAPTORS**
и их охрана conservation
43/2021

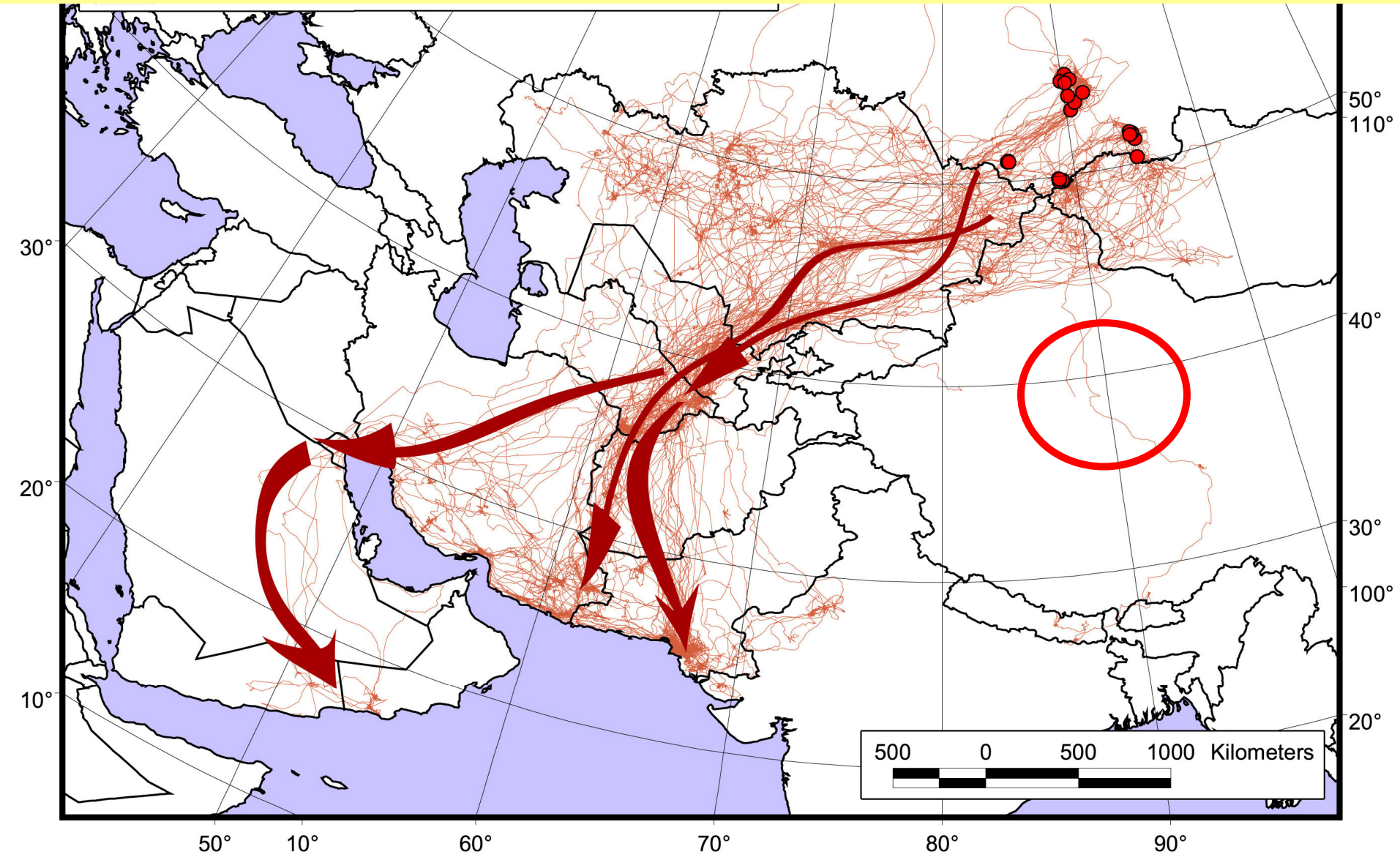
В этом выпуске:
In this issue:

Степной орёл в Калмыкии
Steppe Eagle in Kalmykia

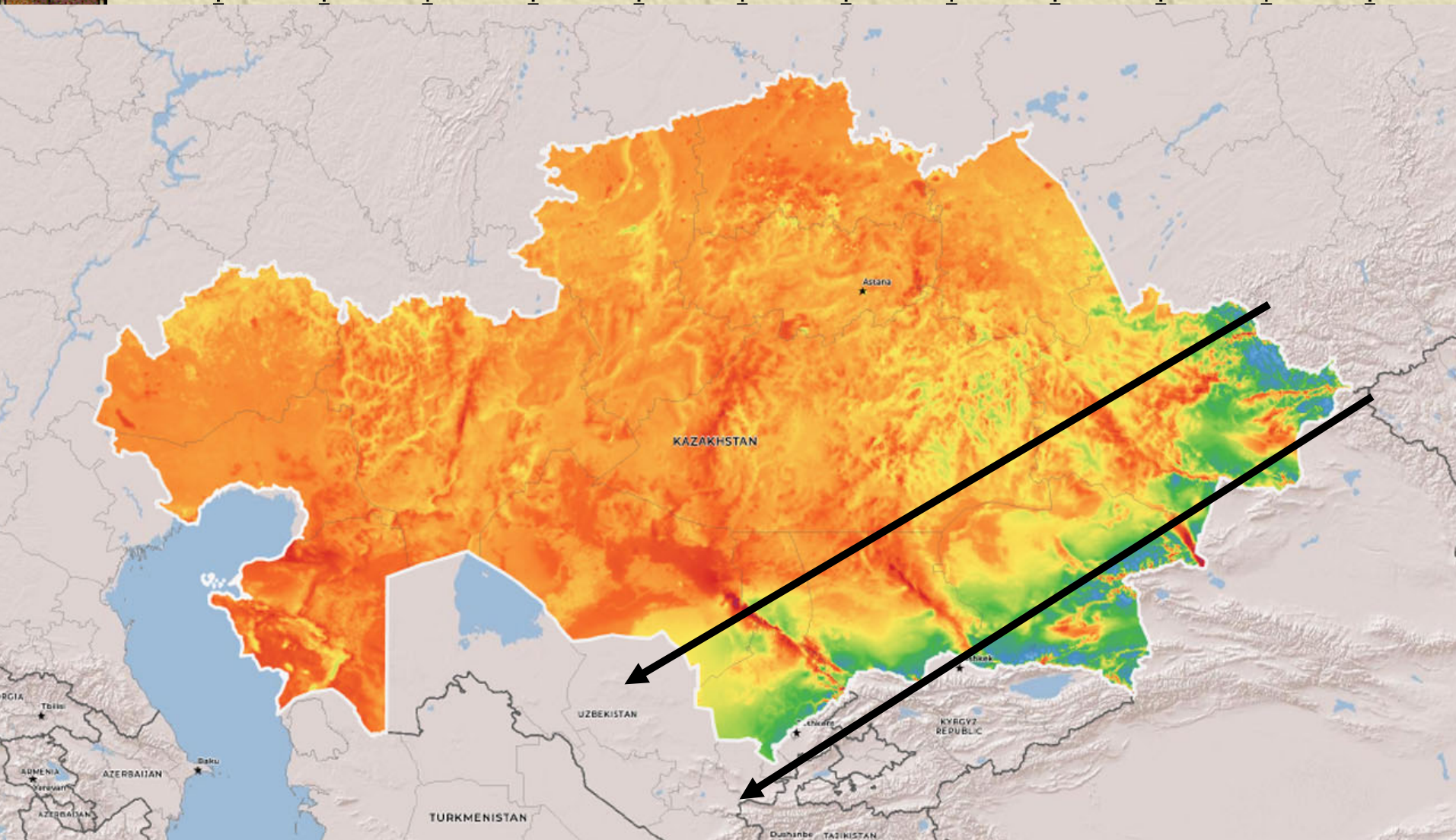
Миграции орлов в Западном Циркум-Гималайском миграционном коридоре и опасность ветроэлектростанций
Migration of eagles in Eastern Circum-Himalayan corridor and the threat from wind farms

Гибель птиц на линиях электропередачи в результате поражения электротоком в России и Казахстане
Electrocution birds on power lines in Russia and Kazakhstan

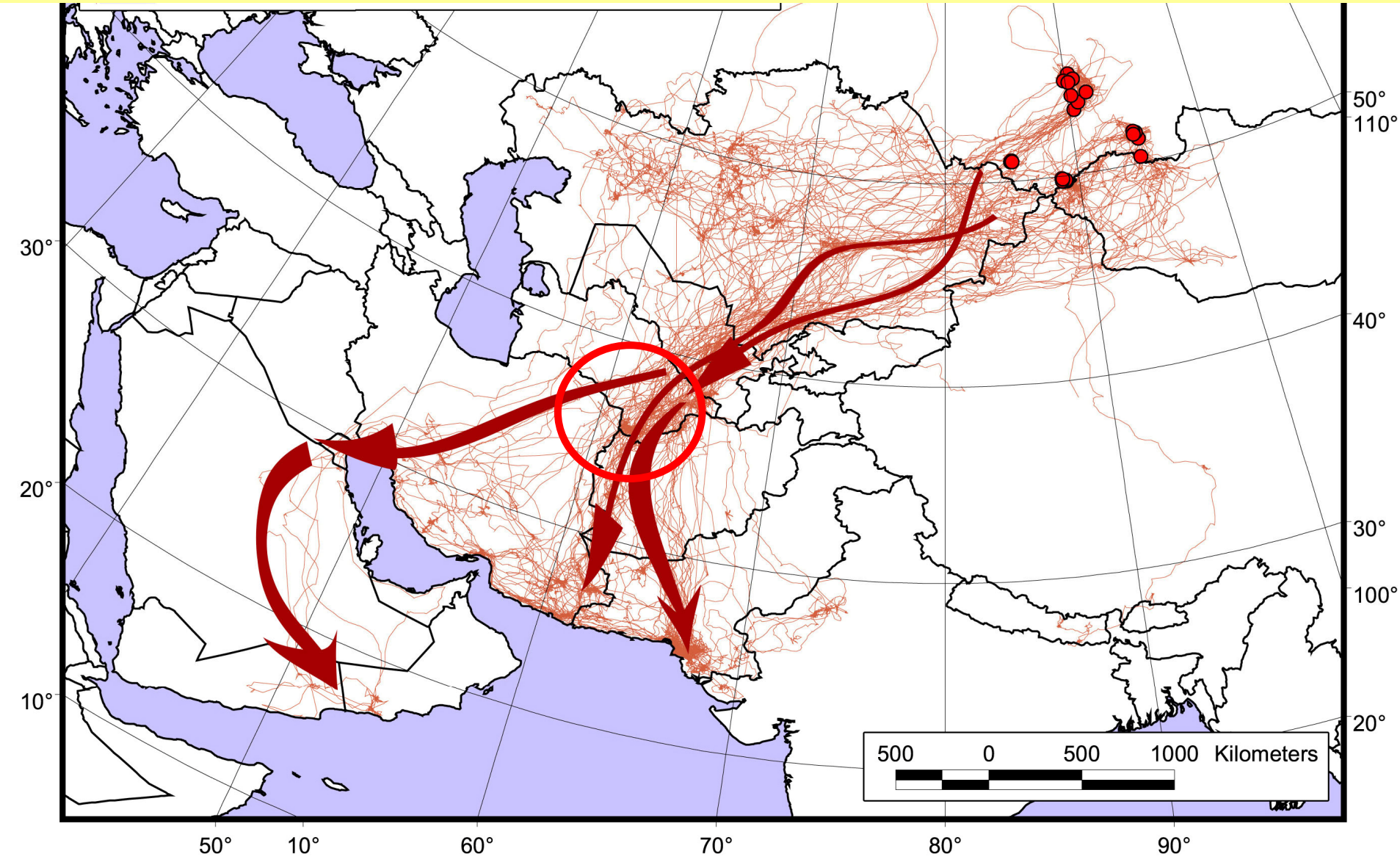
The first and most important thing we found out is that the bulk of the Altai-Sayan Steppe Eagles migrate in the Western Circum-Himalayan Migration Corridor

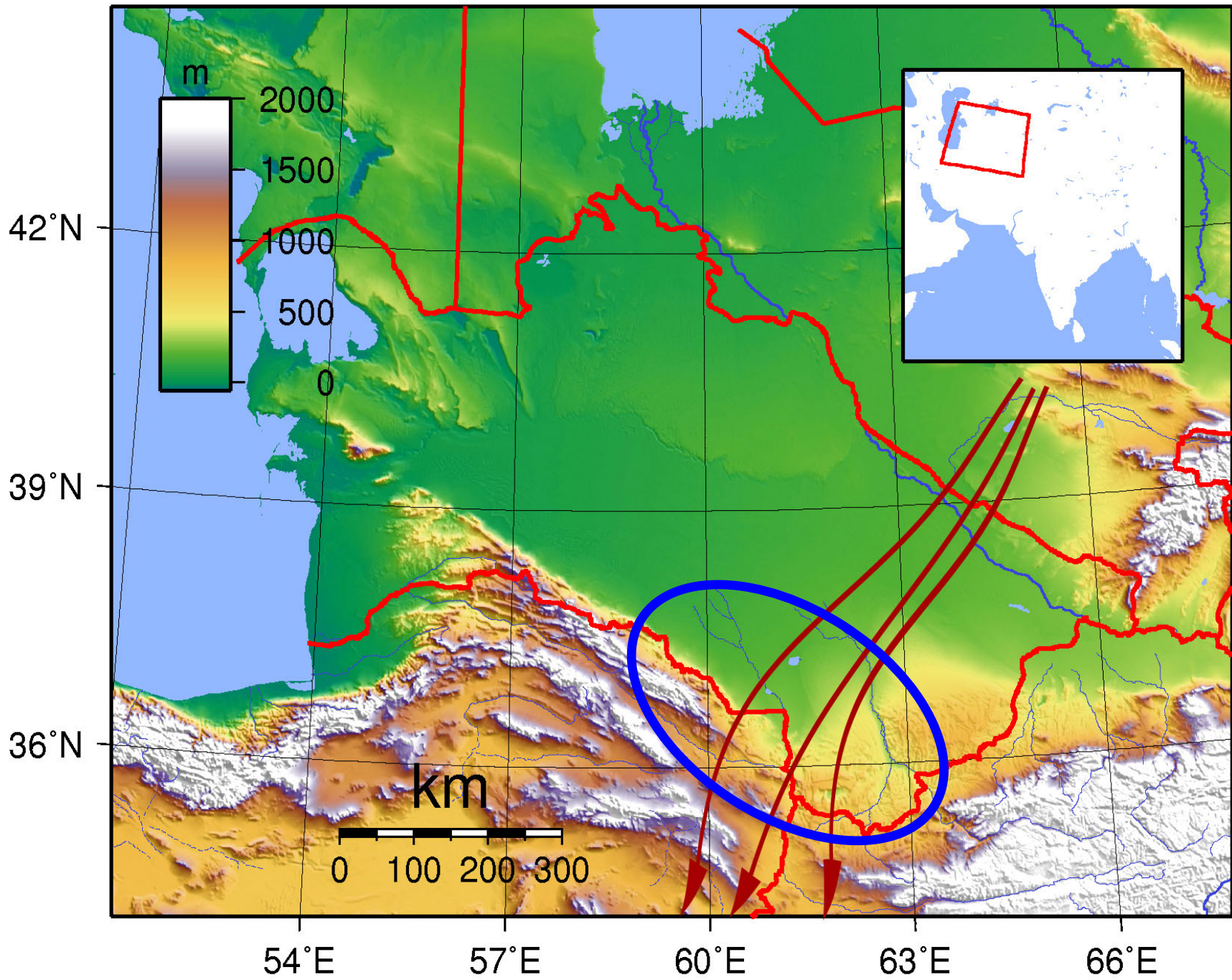


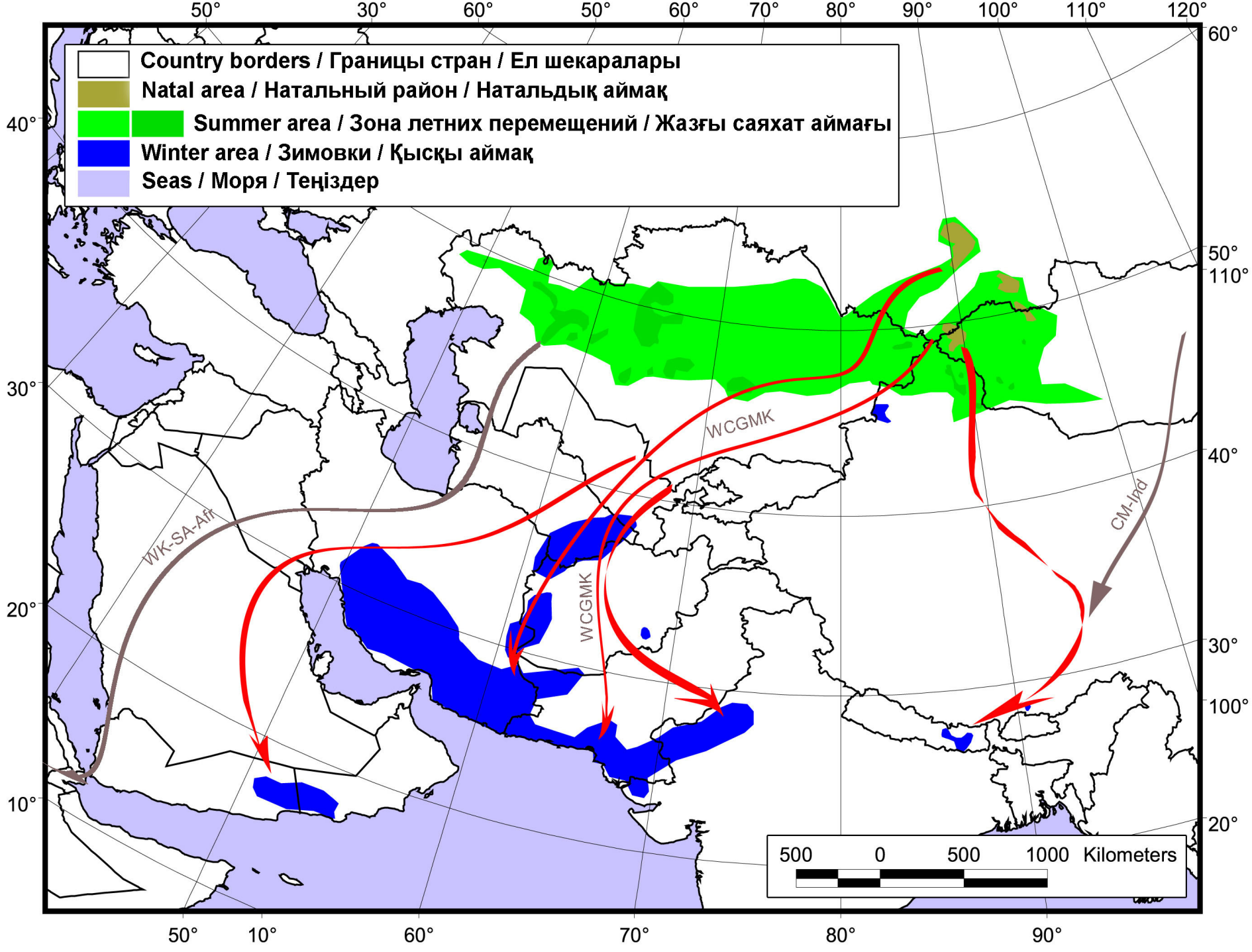
If we look at the wind speed map, we will see that the main migratory flow of eagles is confined to the border zone with moderate wind speeds

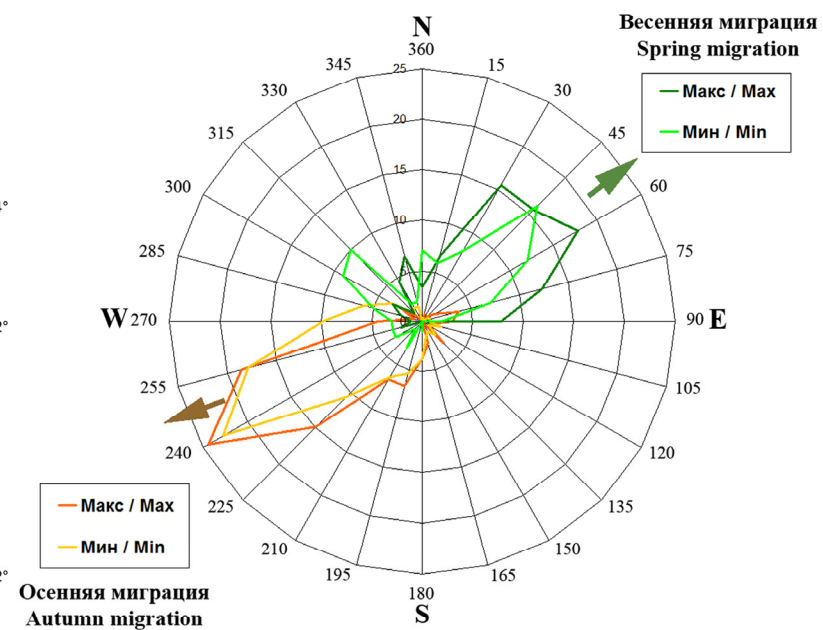
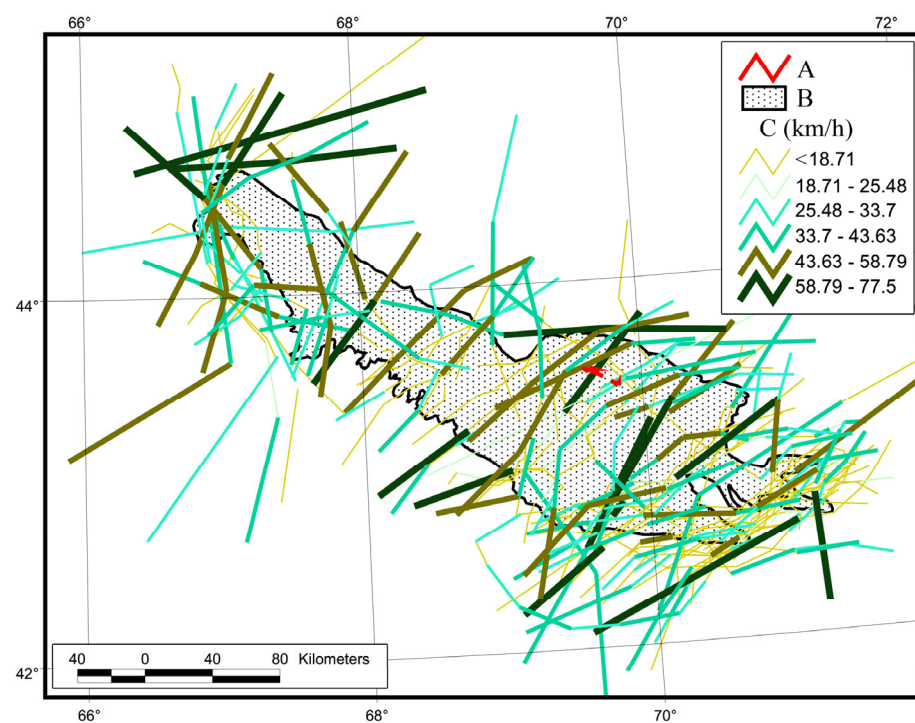
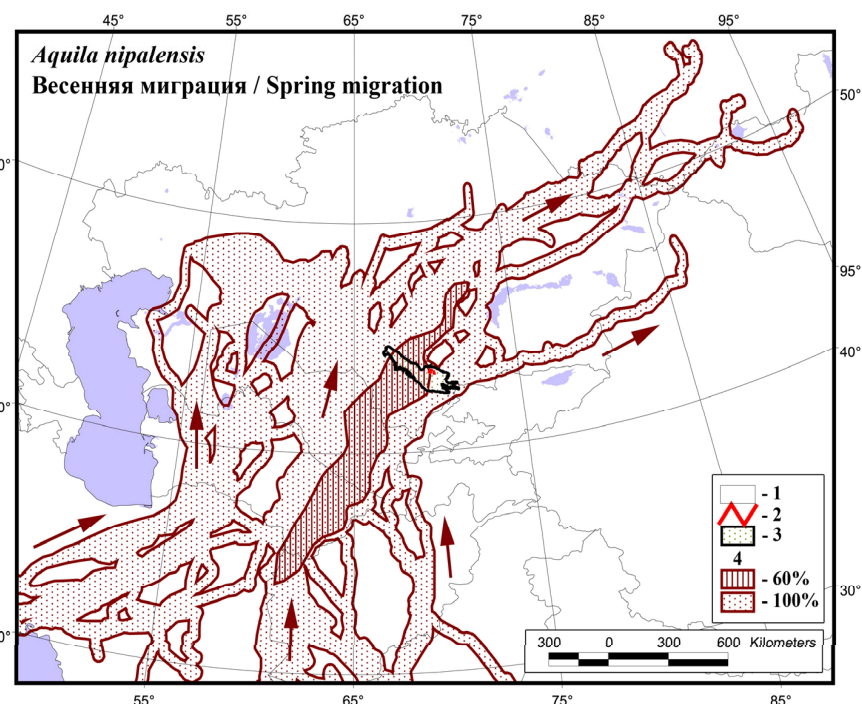
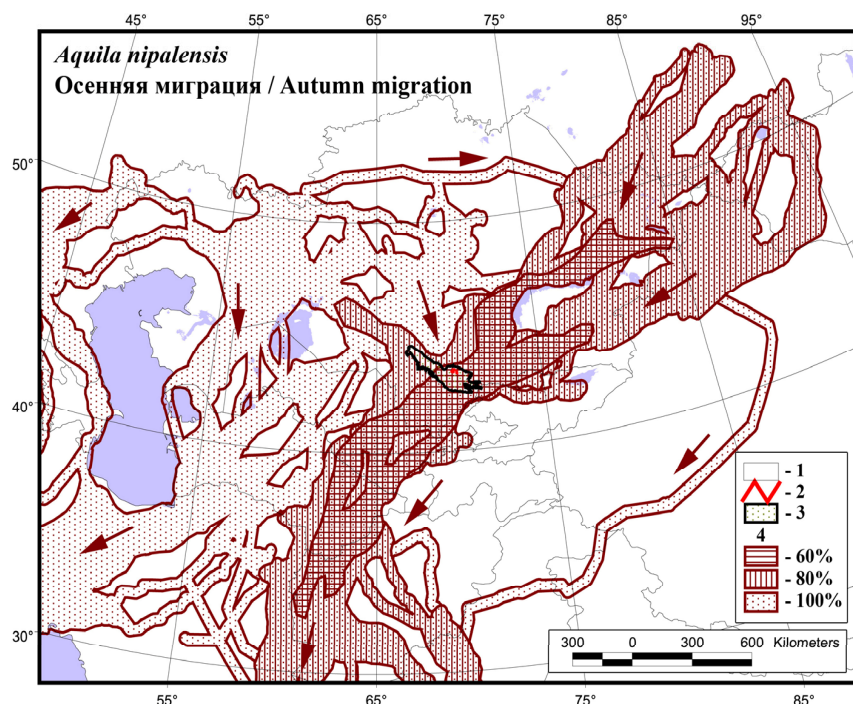


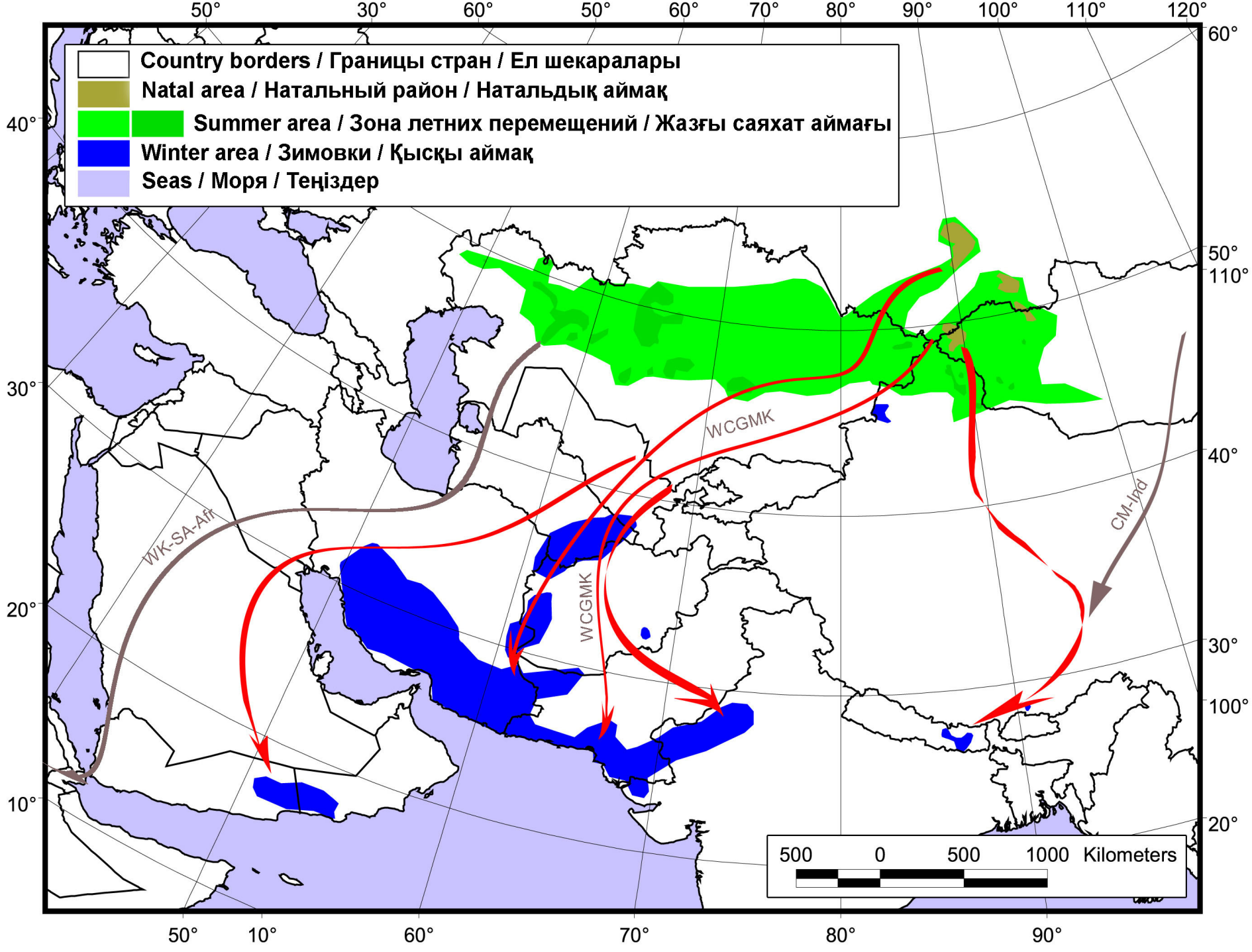
The first and most important thing we found out is that the bulk of the Altai-Sayan Steppe Eagles migrate in the Western Circum-Himalayan Migration Corridor

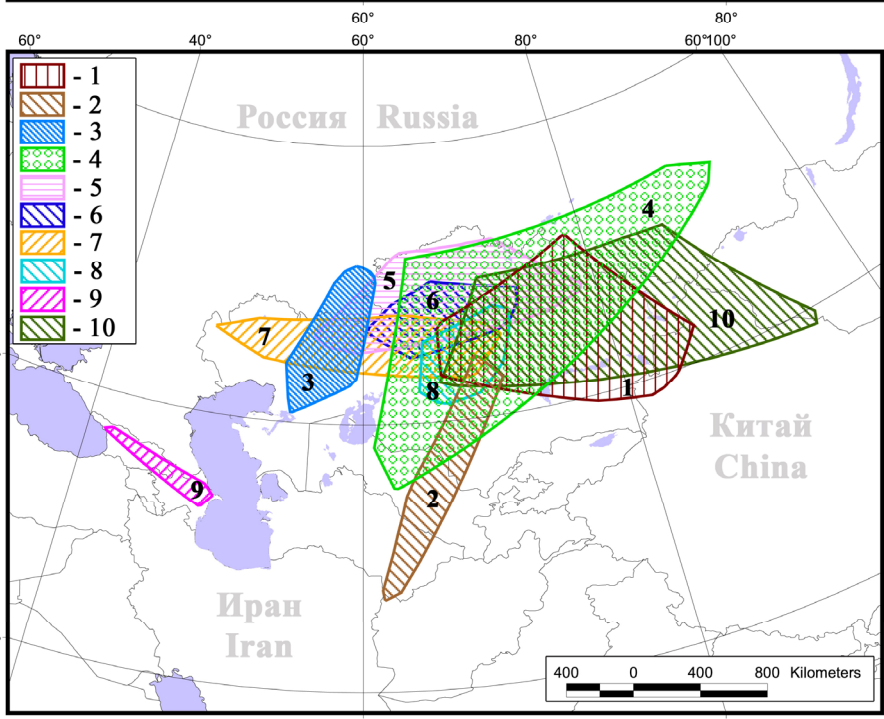
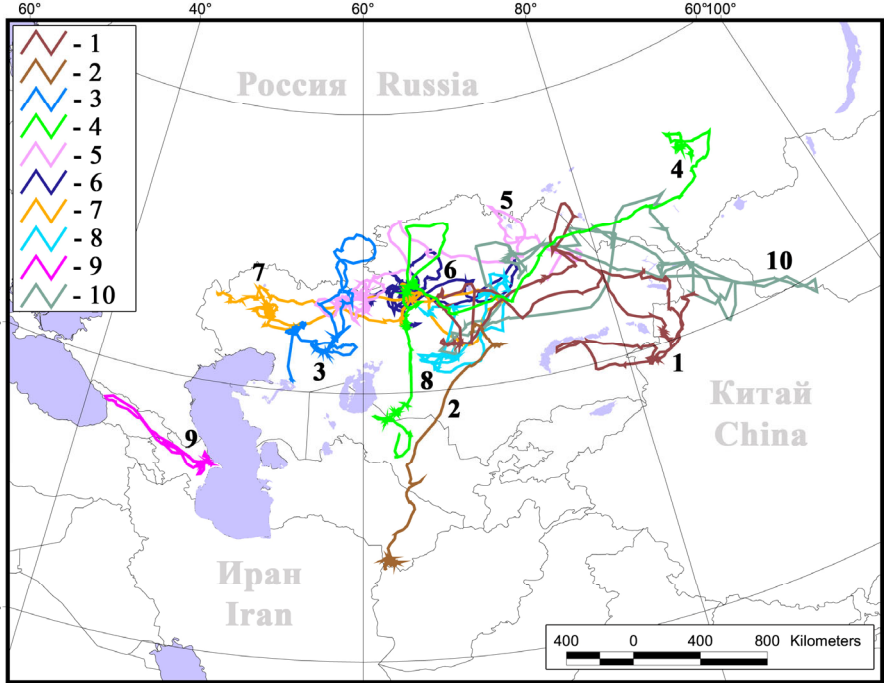






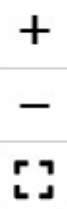
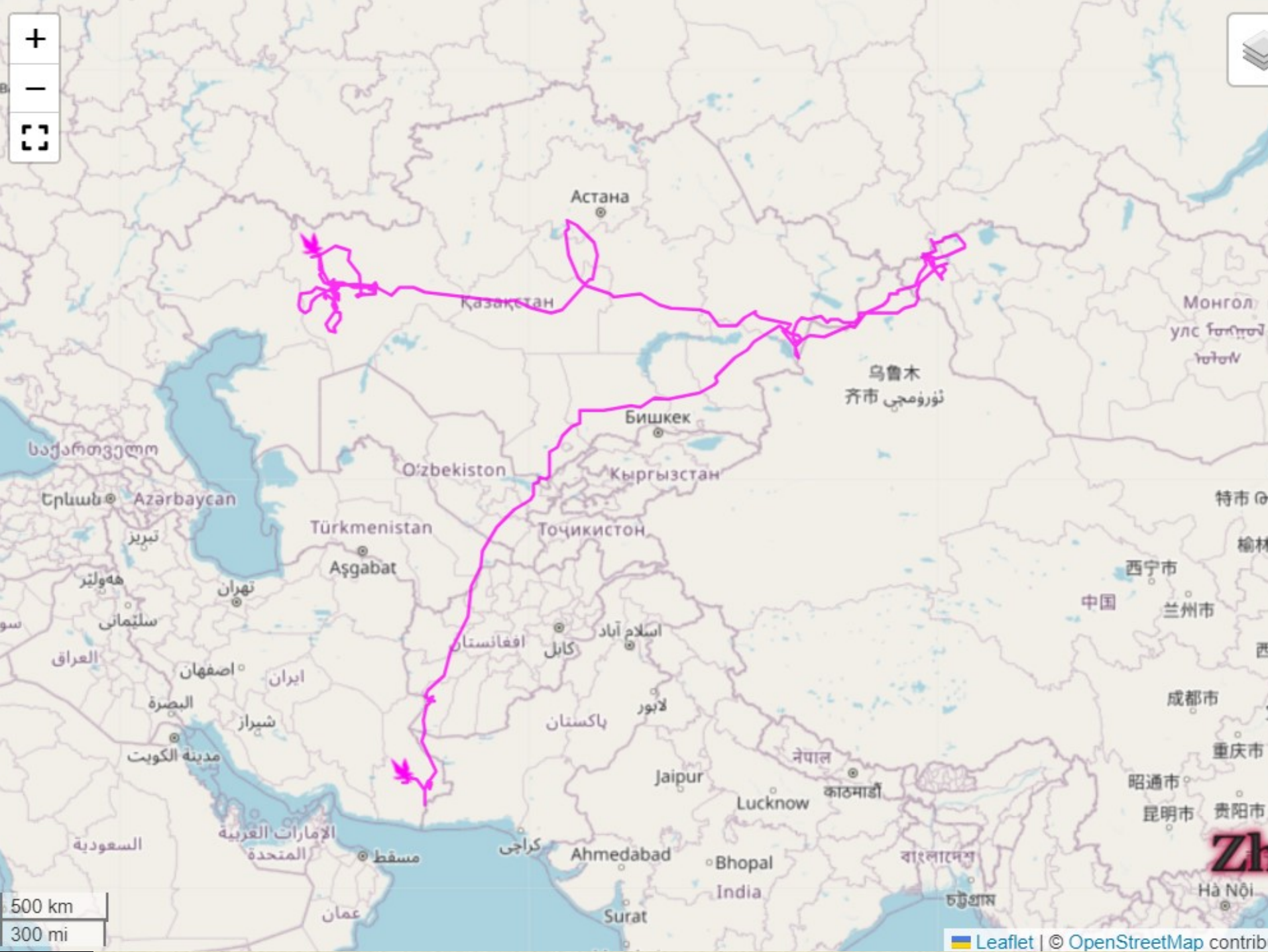








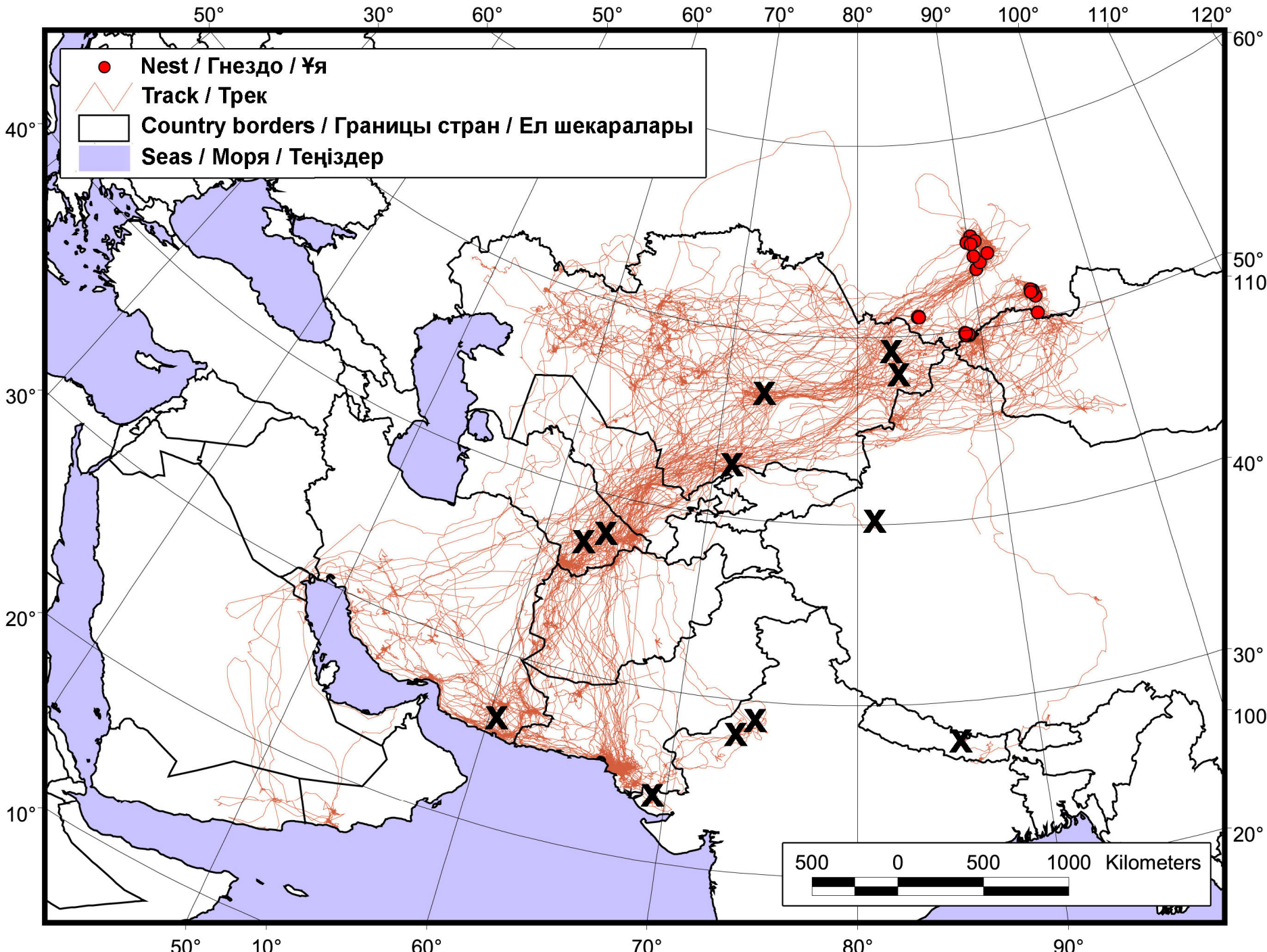


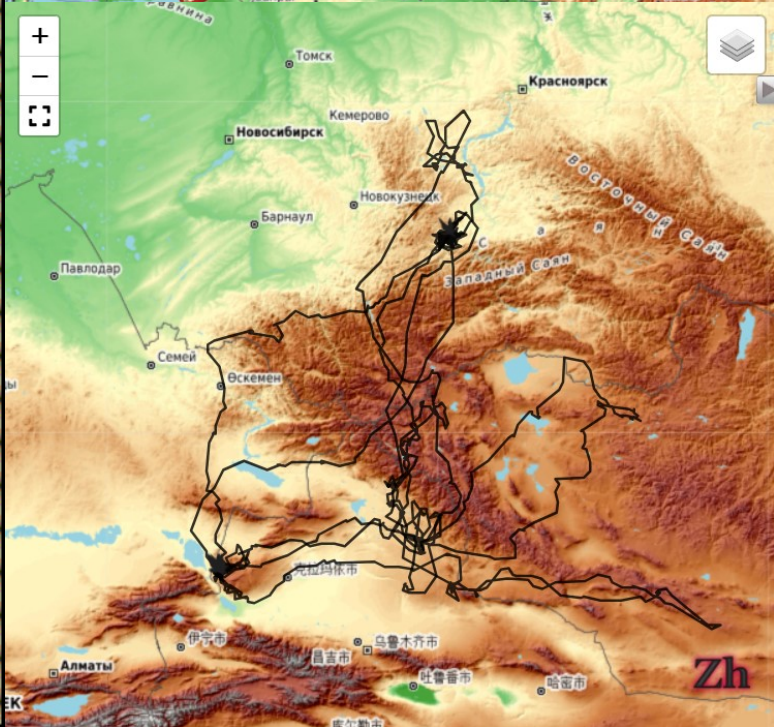
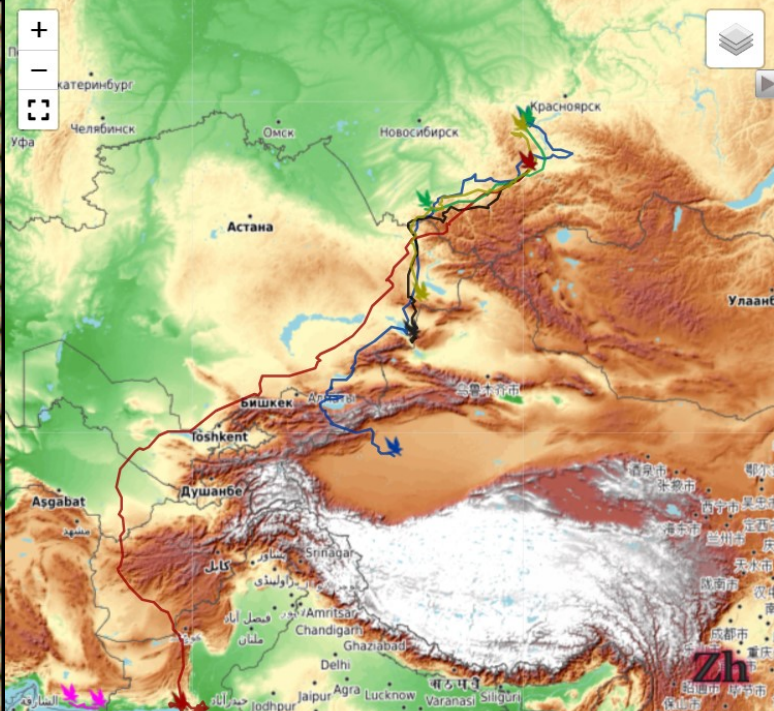


500 km
300 mi

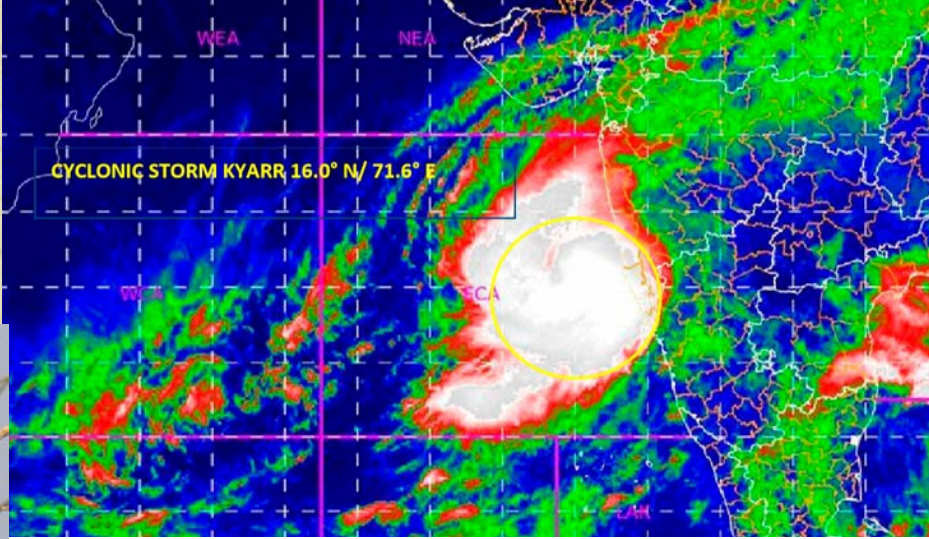


In population nuclei, up to 50% of pairs contain one partner under the age of 6!

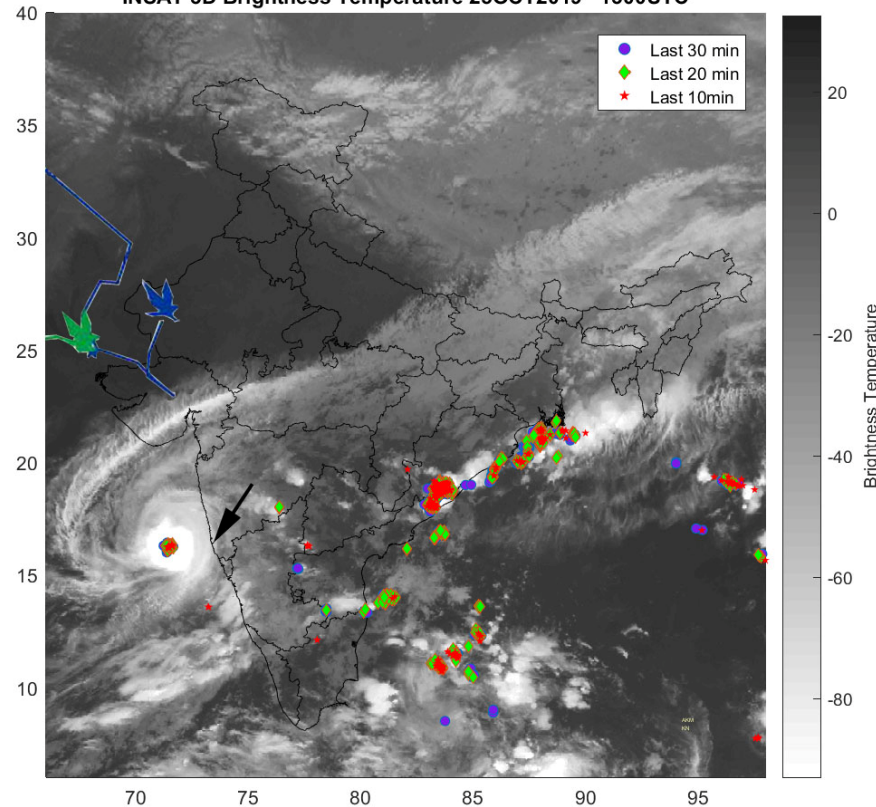


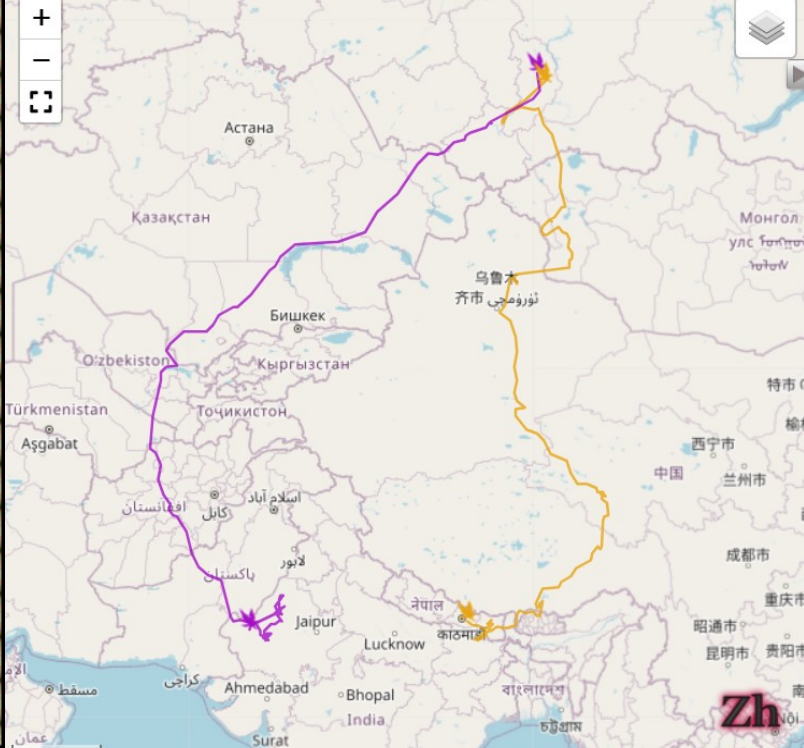
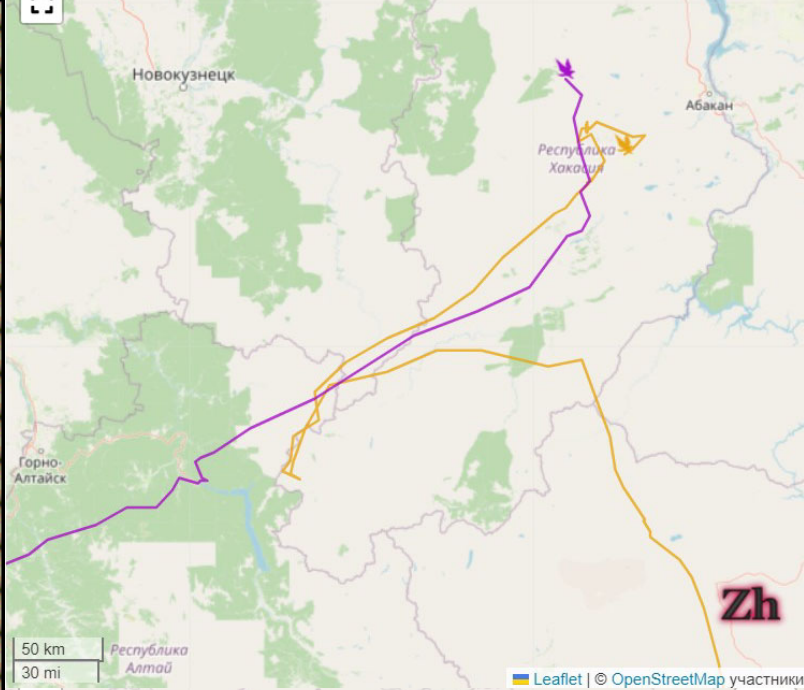


**Eagles sense or see cyclones
and change their movements
and even abandon their usual
wintering grounds**



INDIA METEOROLOGICAL DEPARTMENT
Lightning 25-Oct-2019 13:30 UTC
INSAT 3D Brightness Temperature 25OCT2019 1300UTC



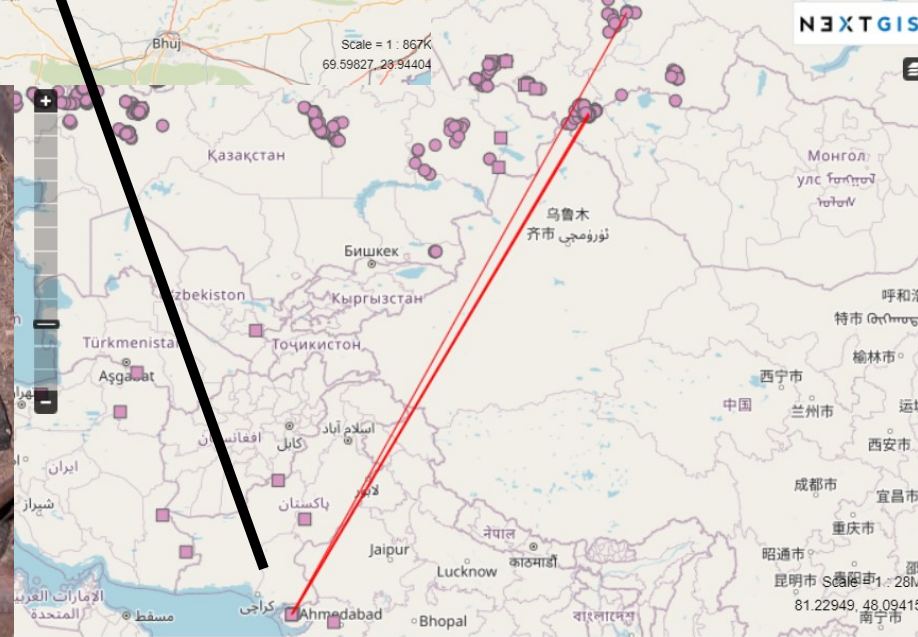
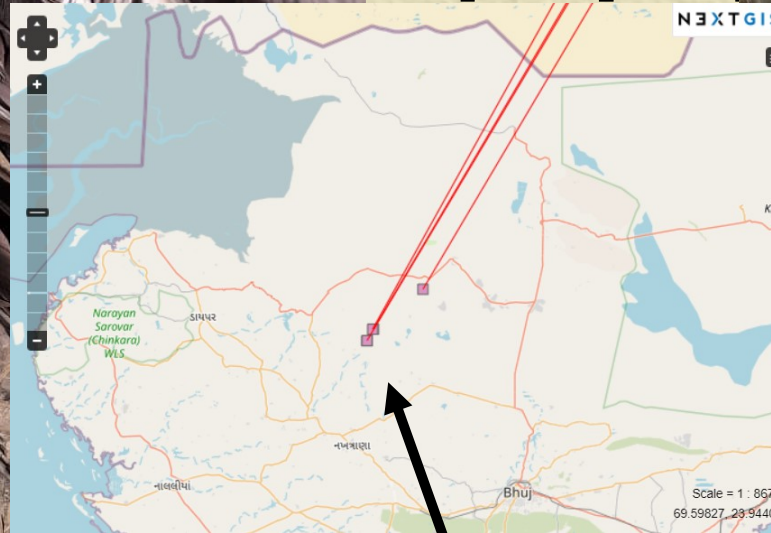


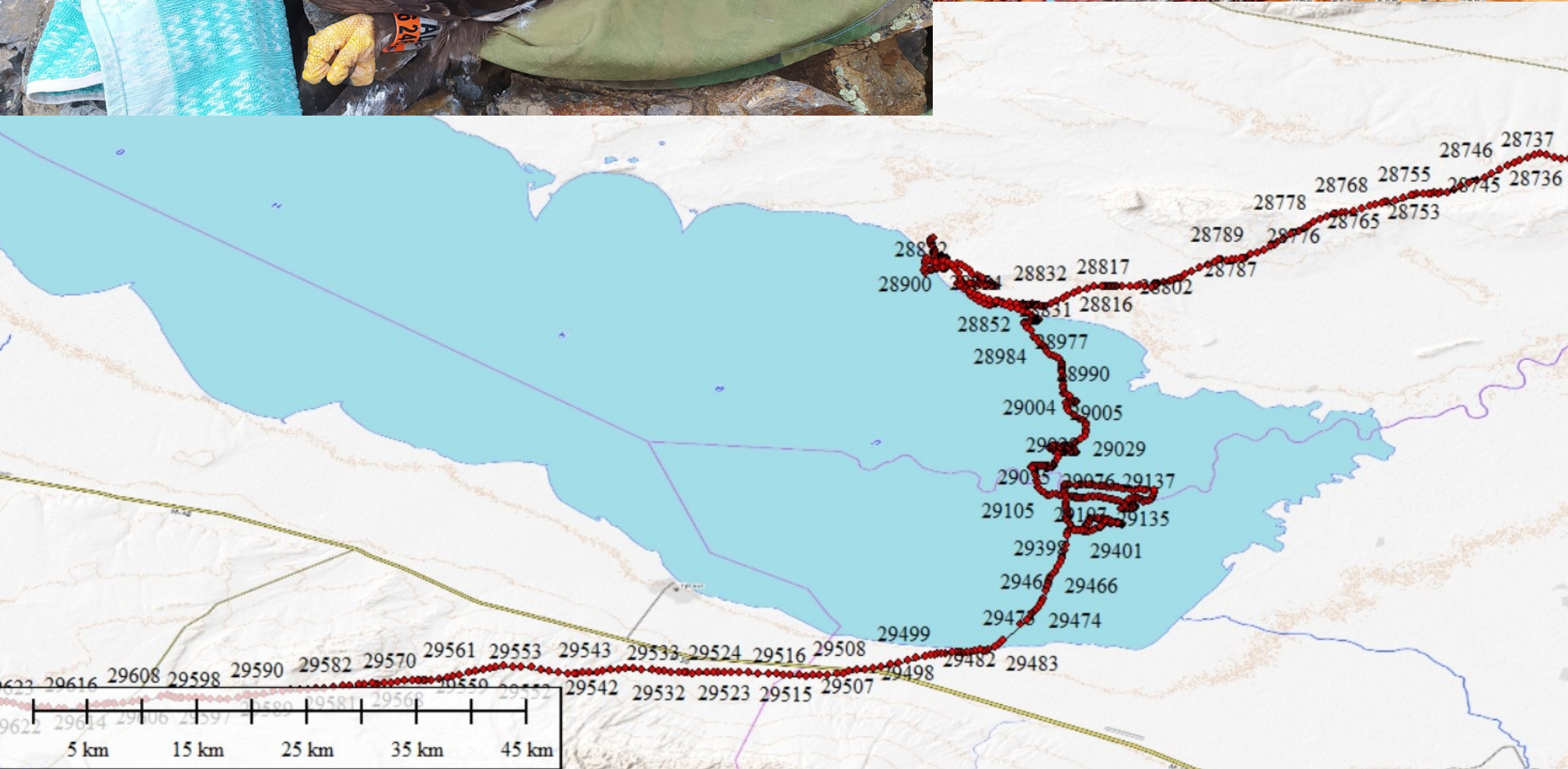


More than 23,500 birds died from avian botulism in 2019 on the lake Sambar and its vicinity (in Jaipur and Nagaur districts) in Rajasthan (Singh, Sen, 2023).



A dead steppe eagle from the Altai-Sayan region







Thank you for the attention!