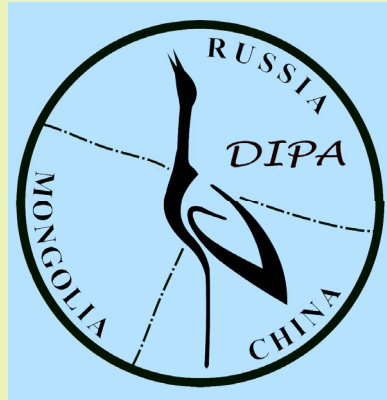


# REMOTE TRACKING OF WHITE-TAILED SEA EAGLE (HALIAEETUS ALBICILLA) FROM TRANSBAIKALIA, RUSSIA: MIGRATION, WINTERING, SUMMER STAY

Goroshko O.A., Zaitsev I.S.

Dou Huashan, Anisimov Yu.A., Liu Songtao, Pyzhianov S.V.

Project of International (Russia-China-Mongolia) Protected Area Dauria (DIPA)



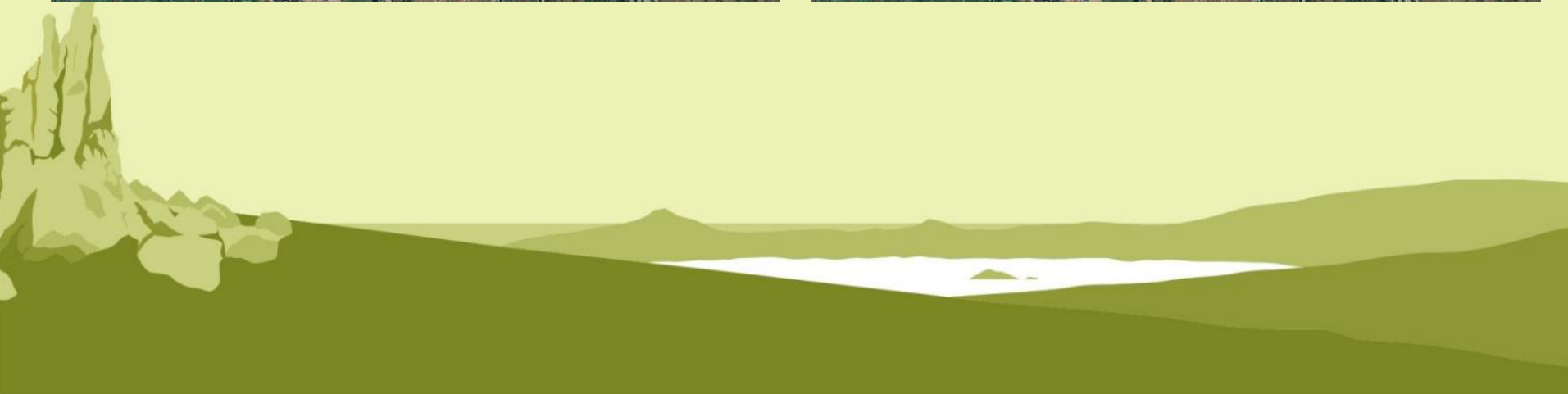
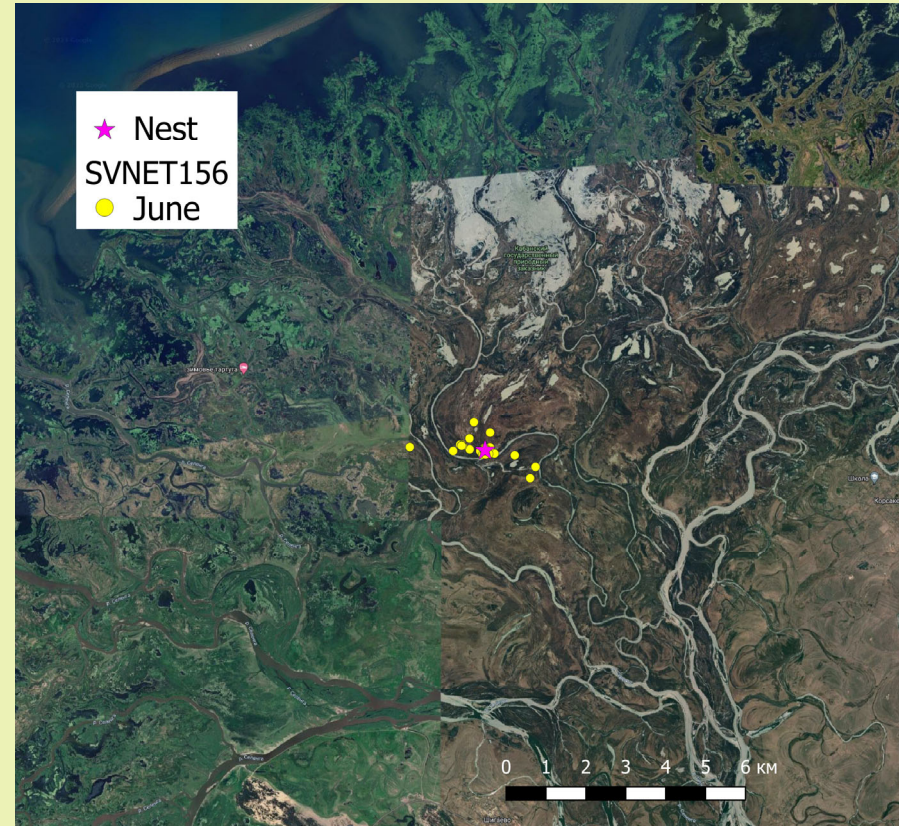
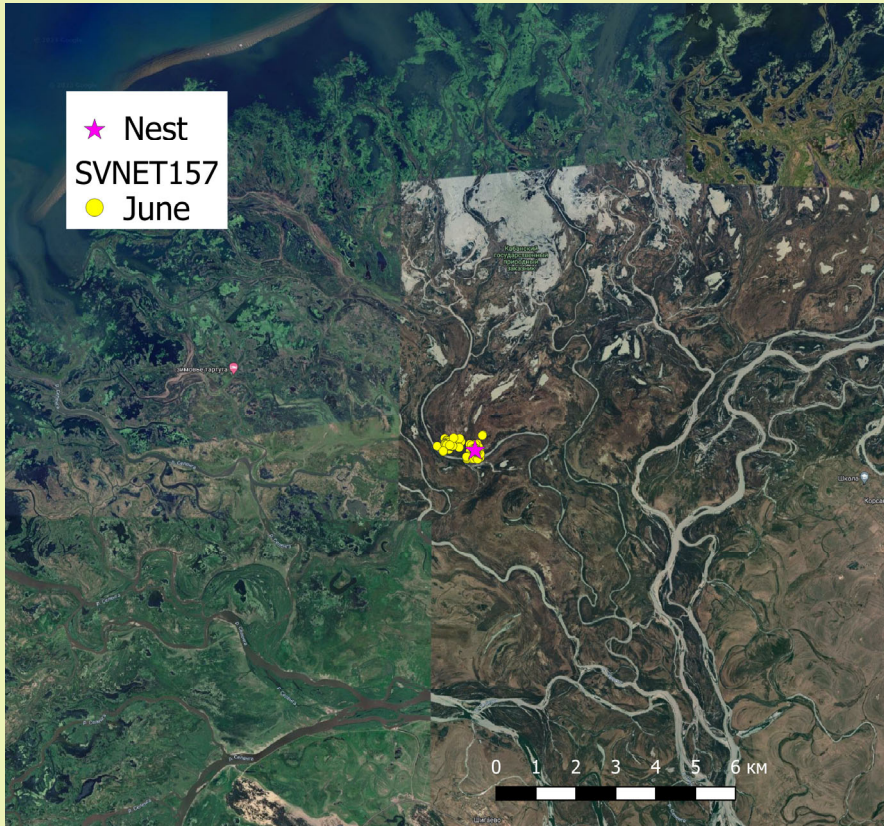
*Photo: Jacob Spinks*

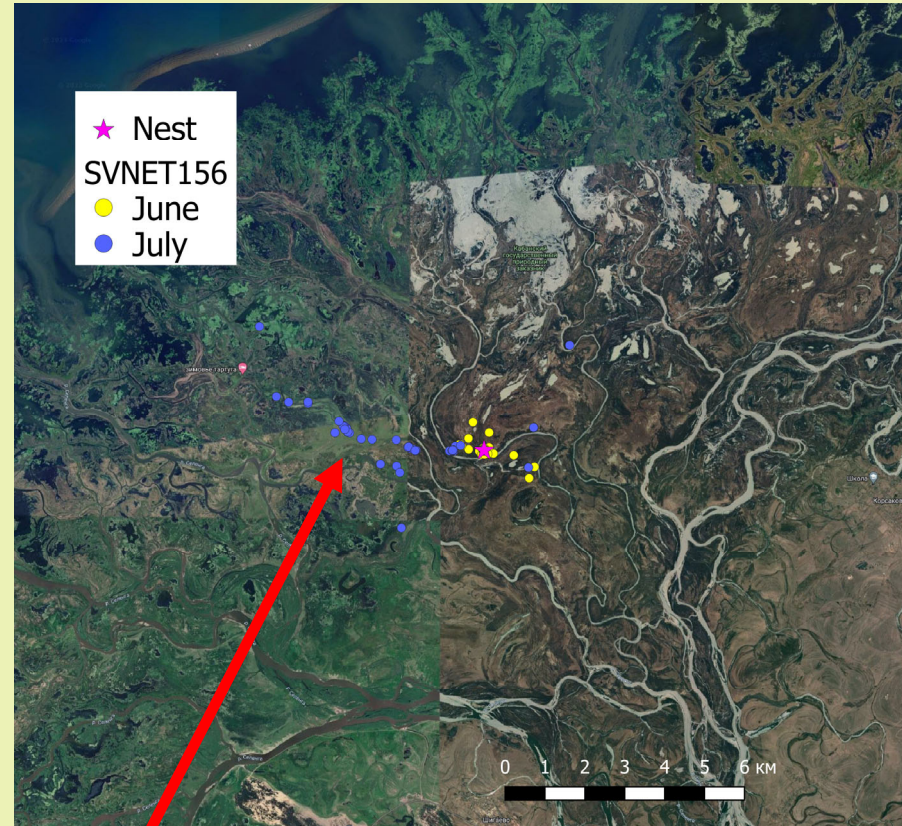
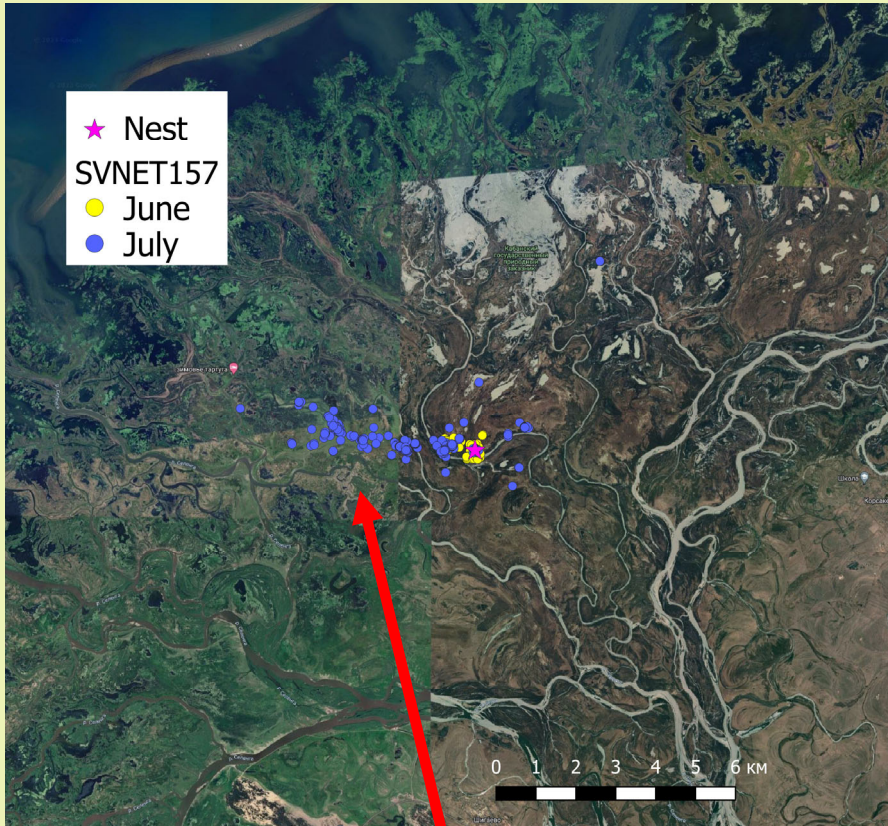
State Nature Biosphere Reserve "Daursky"



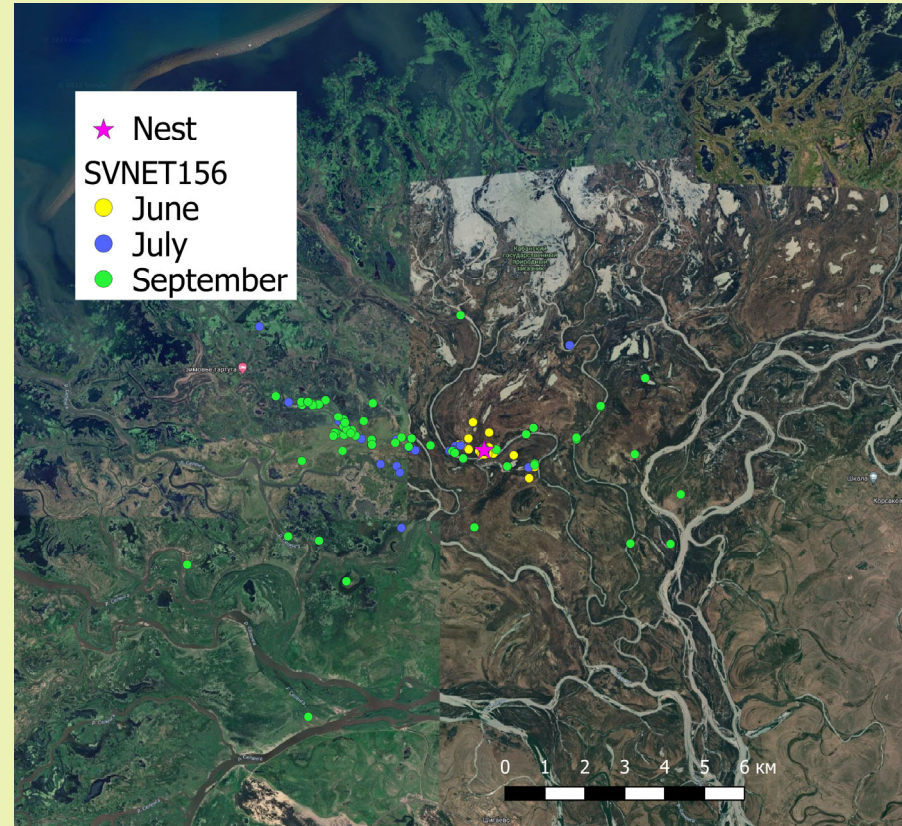
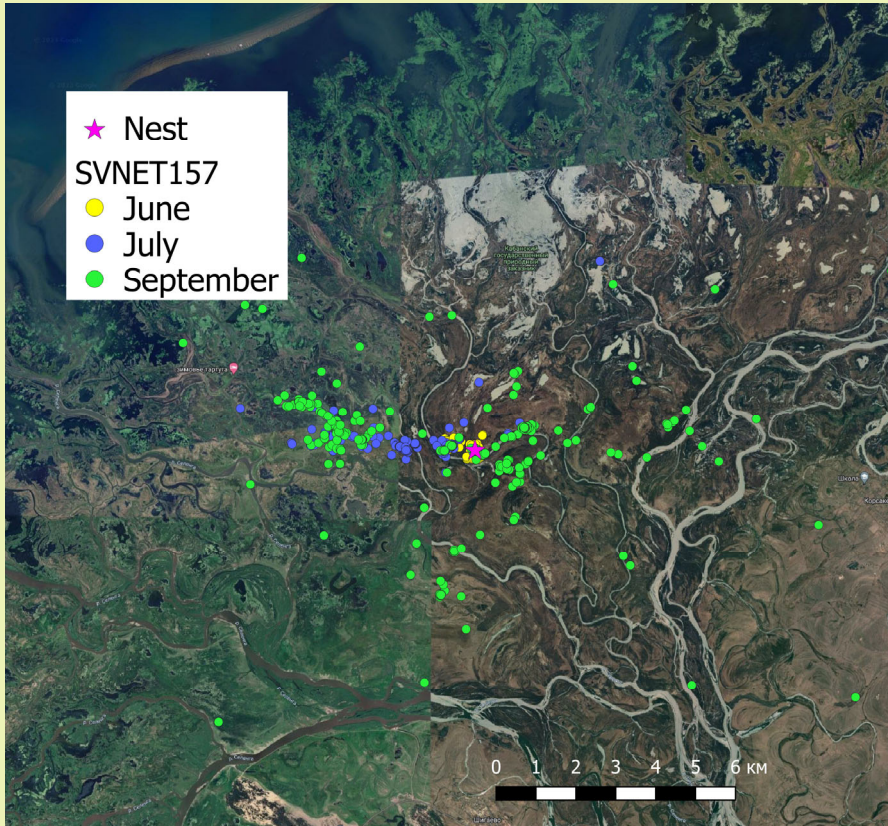
ДАУРСКИЙ

# Behavior of eagles during it's first summer

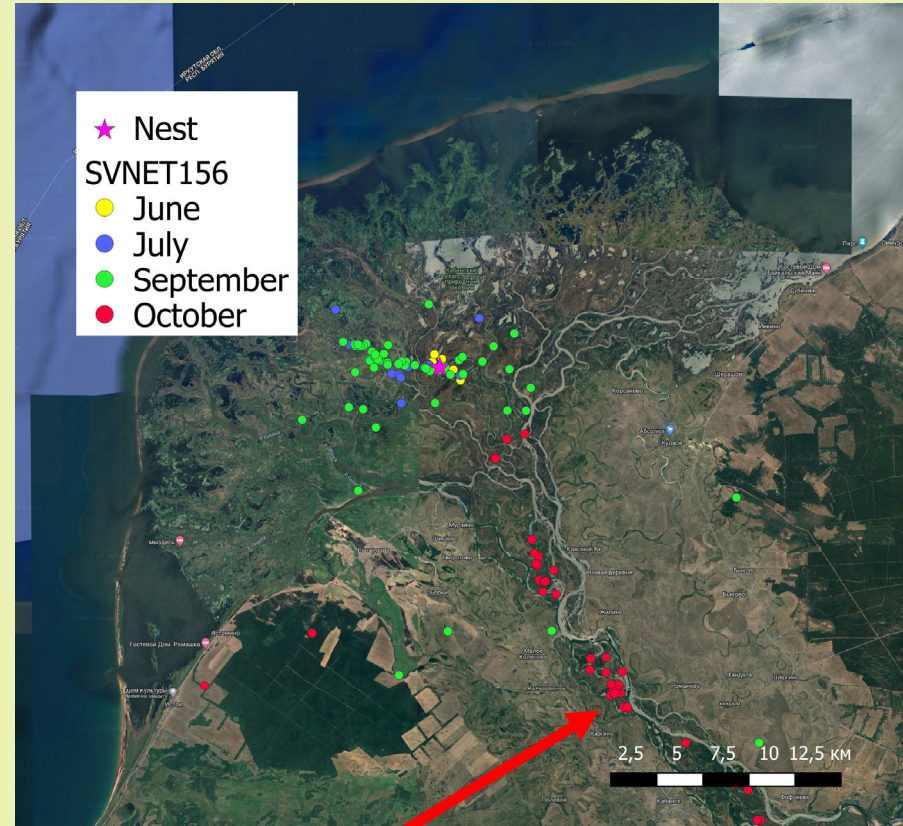
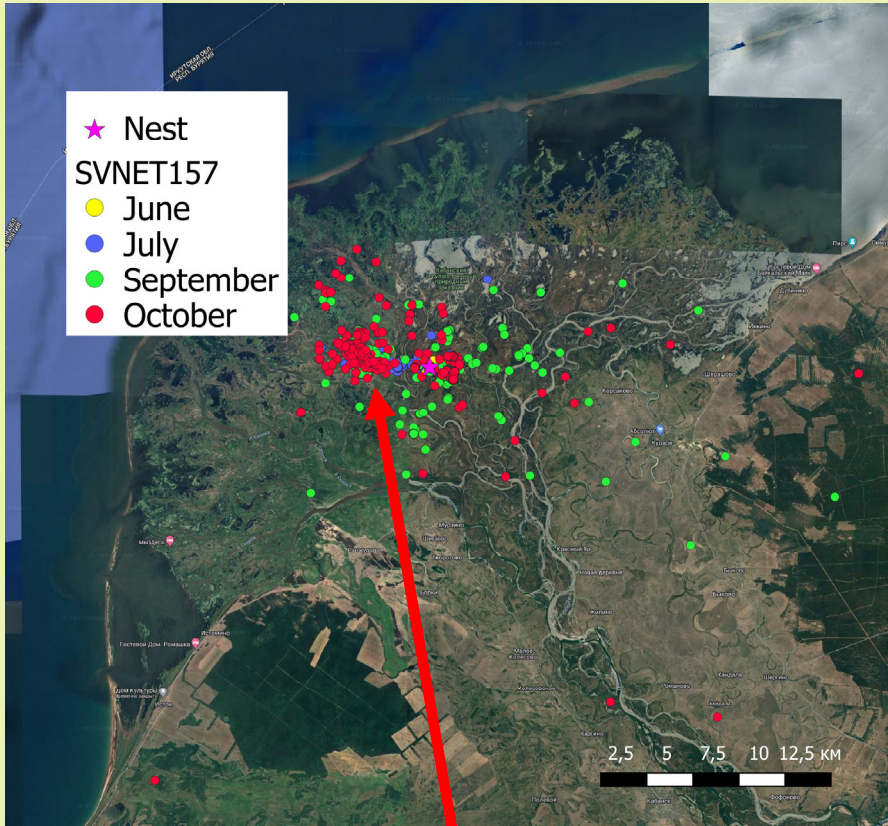




**First major flight outside of nest (same direction for both birds) 2-5 km.**



**More active major flights, birds are still mostly together**



**Two birds are completely separated in October**

# Start and end dates of autumn migration, 2020-2021

8.10

23.10

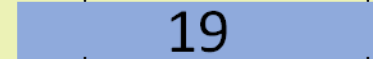
7.11

22.11

7.12

22.12

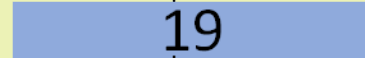
SVNET156



19

2020

SVNET157



19

Died during wintering

SVNET158



56

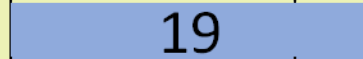
SVNET149



16

Died in Mongolia during migration

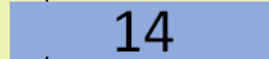
SVNET156



19

2021

SVNET157



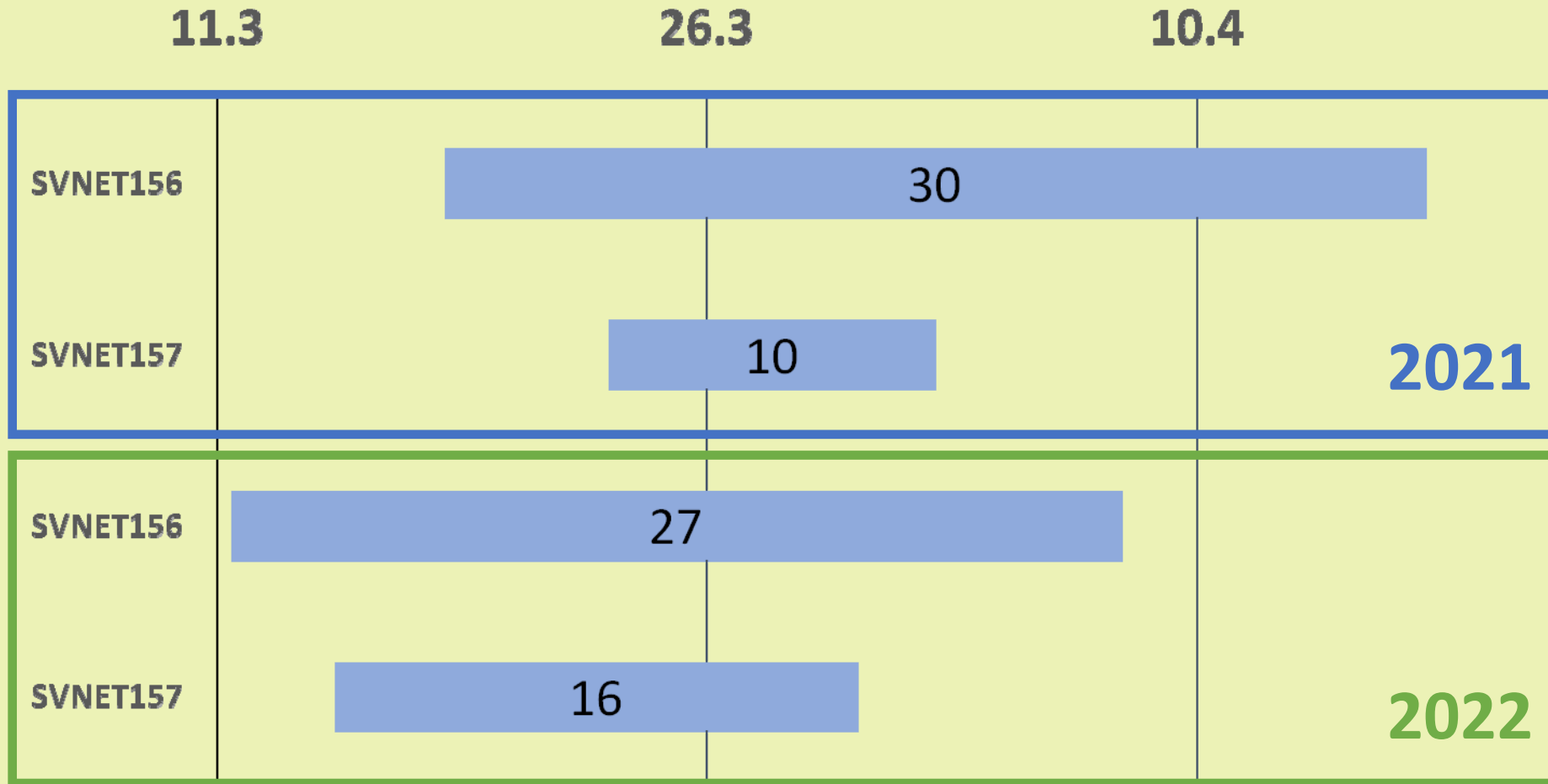
14


Nest 1

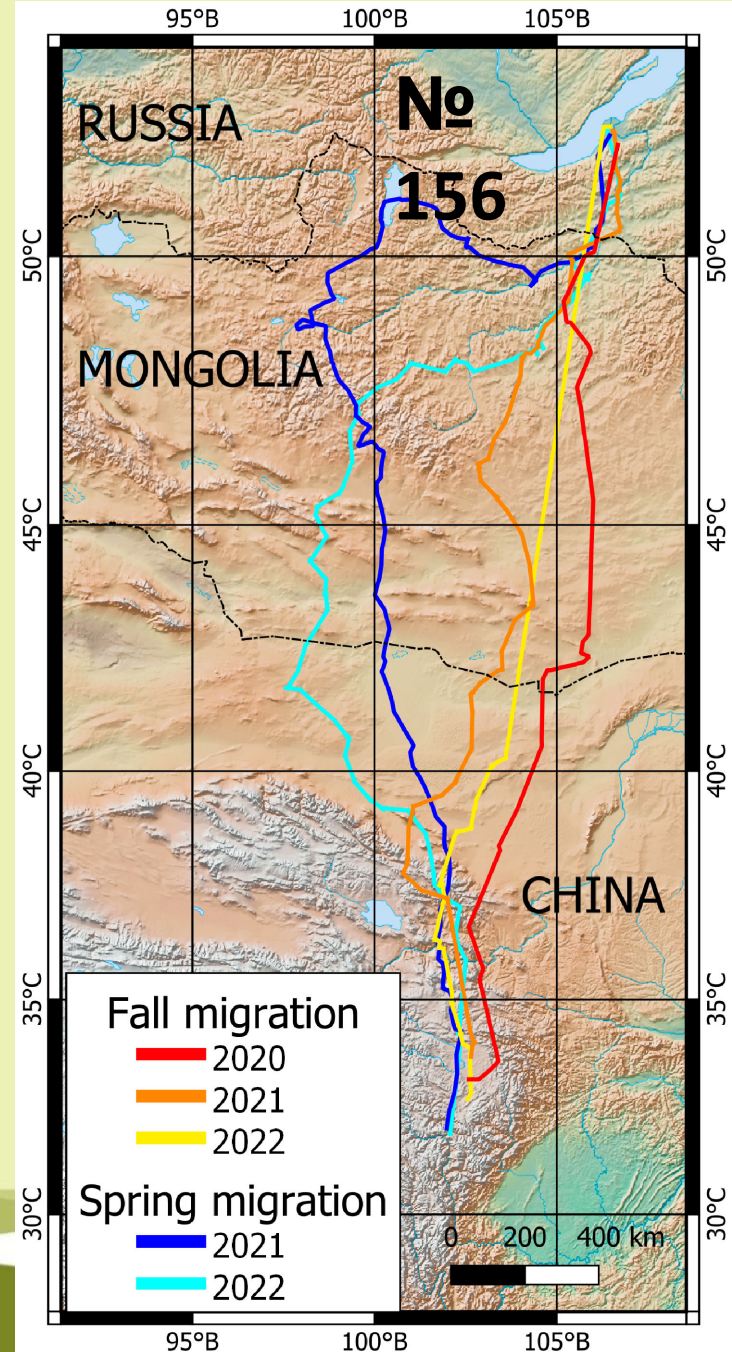
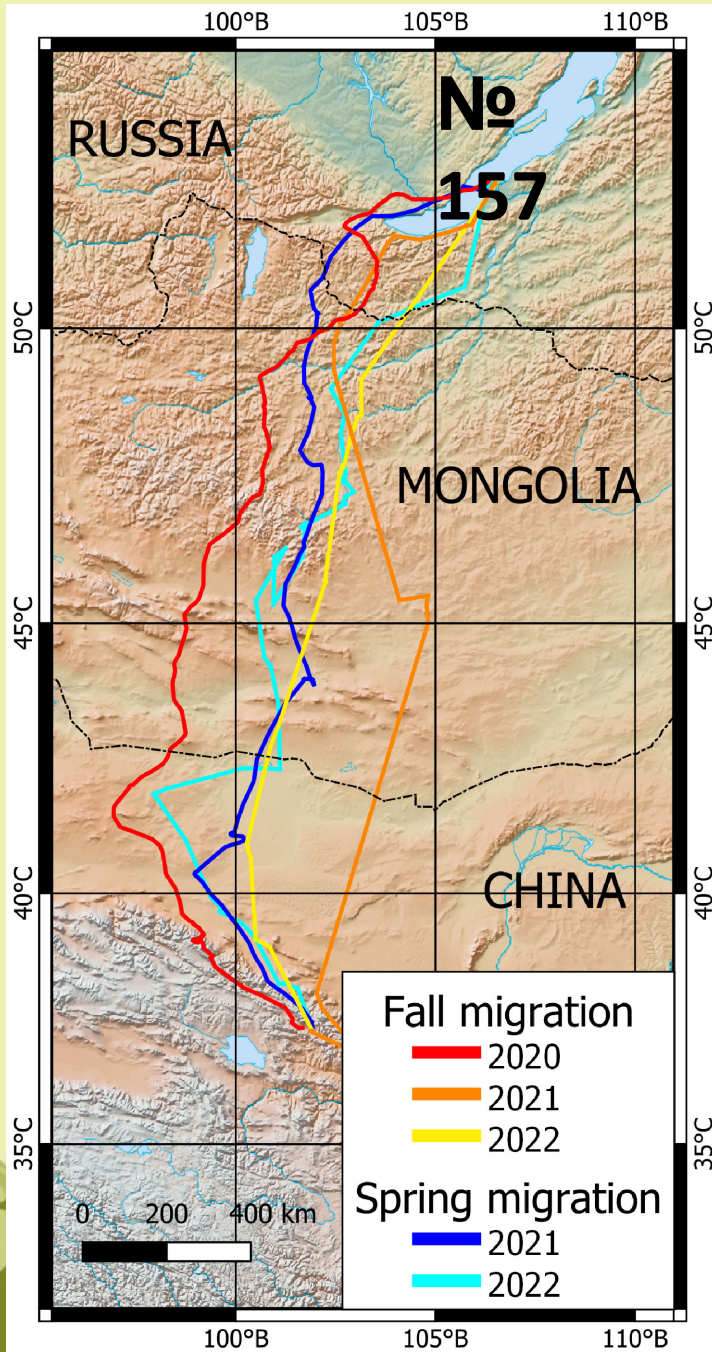


Nest 2

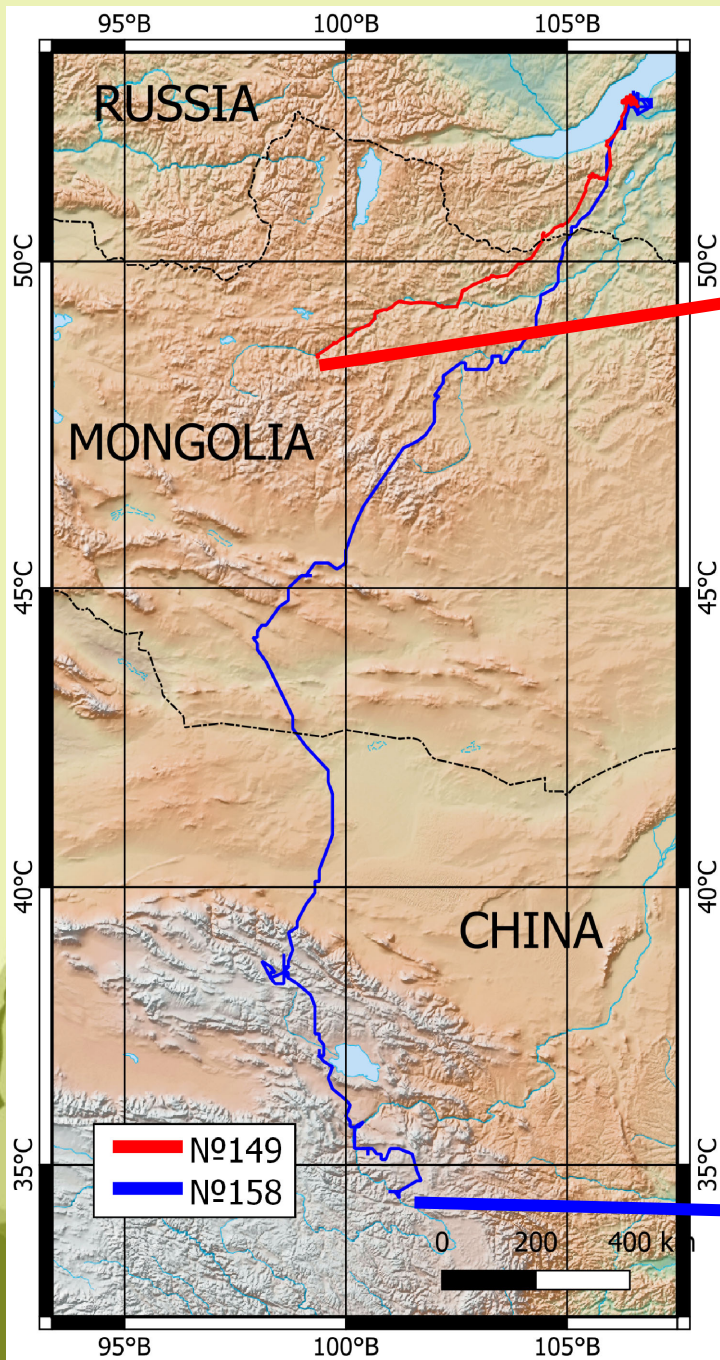
# Start and end dates of spring migration, 2021-2022



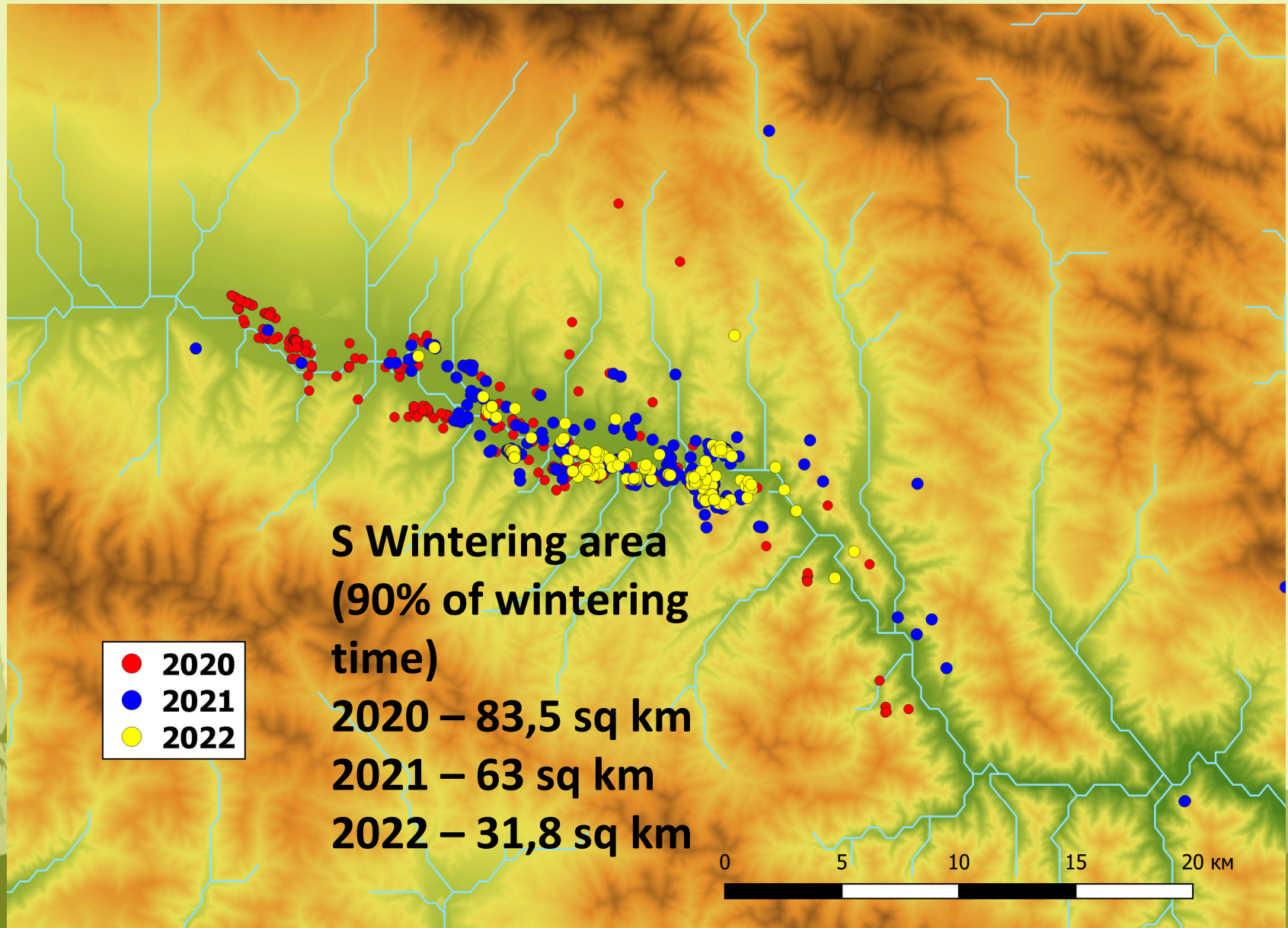
 **Nest 1**



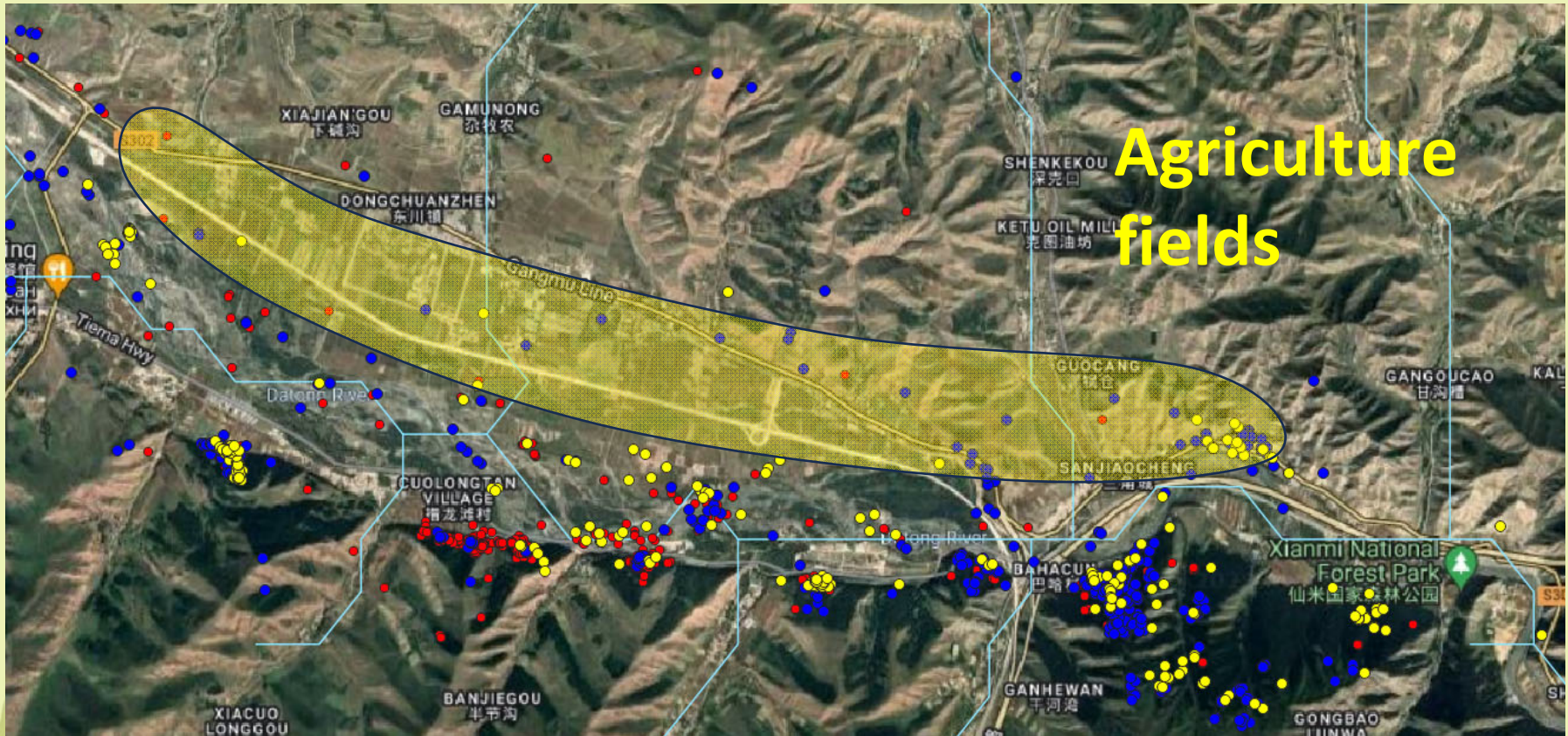


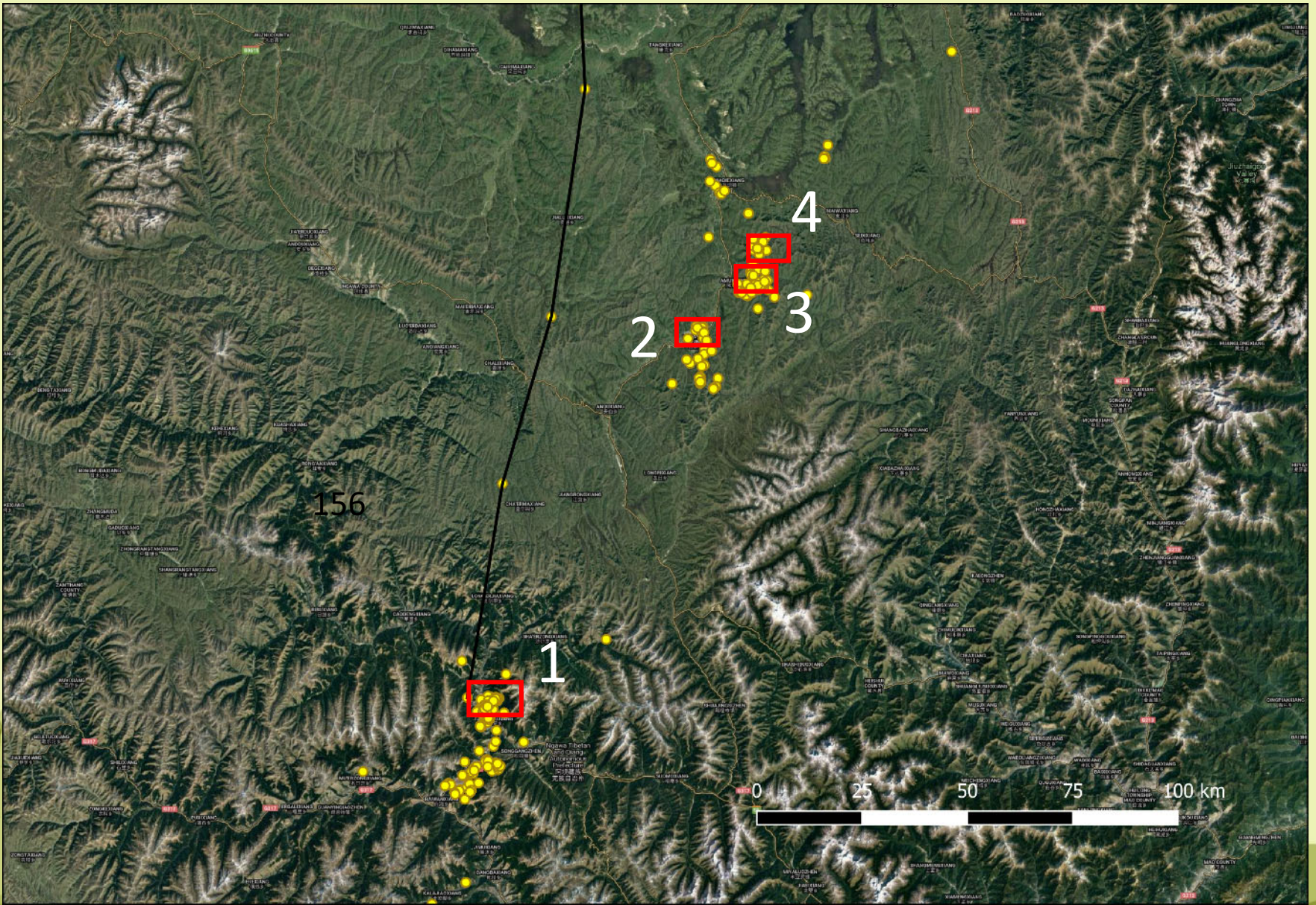


# SVNET157 Wintering area 2020 – 2022

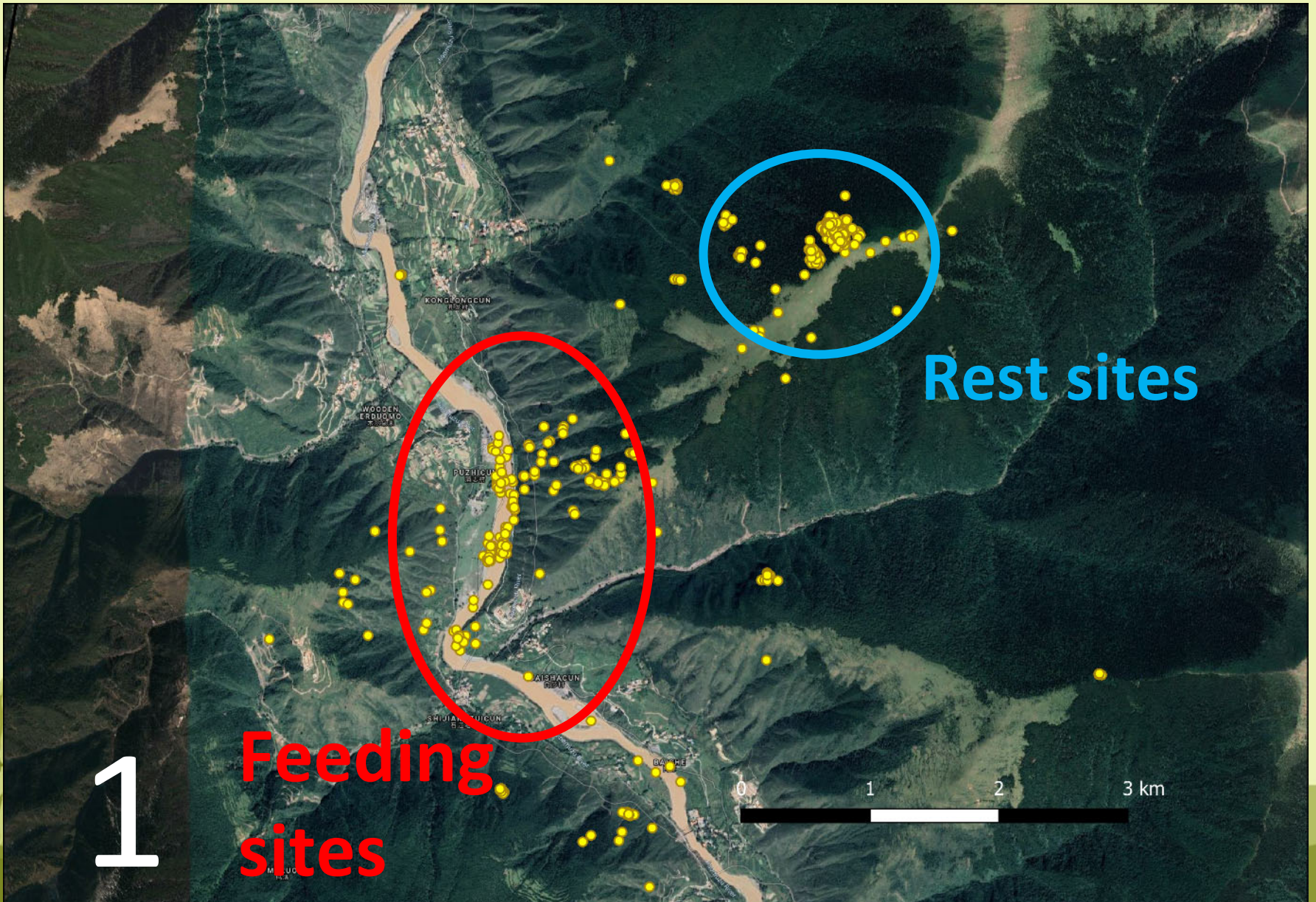


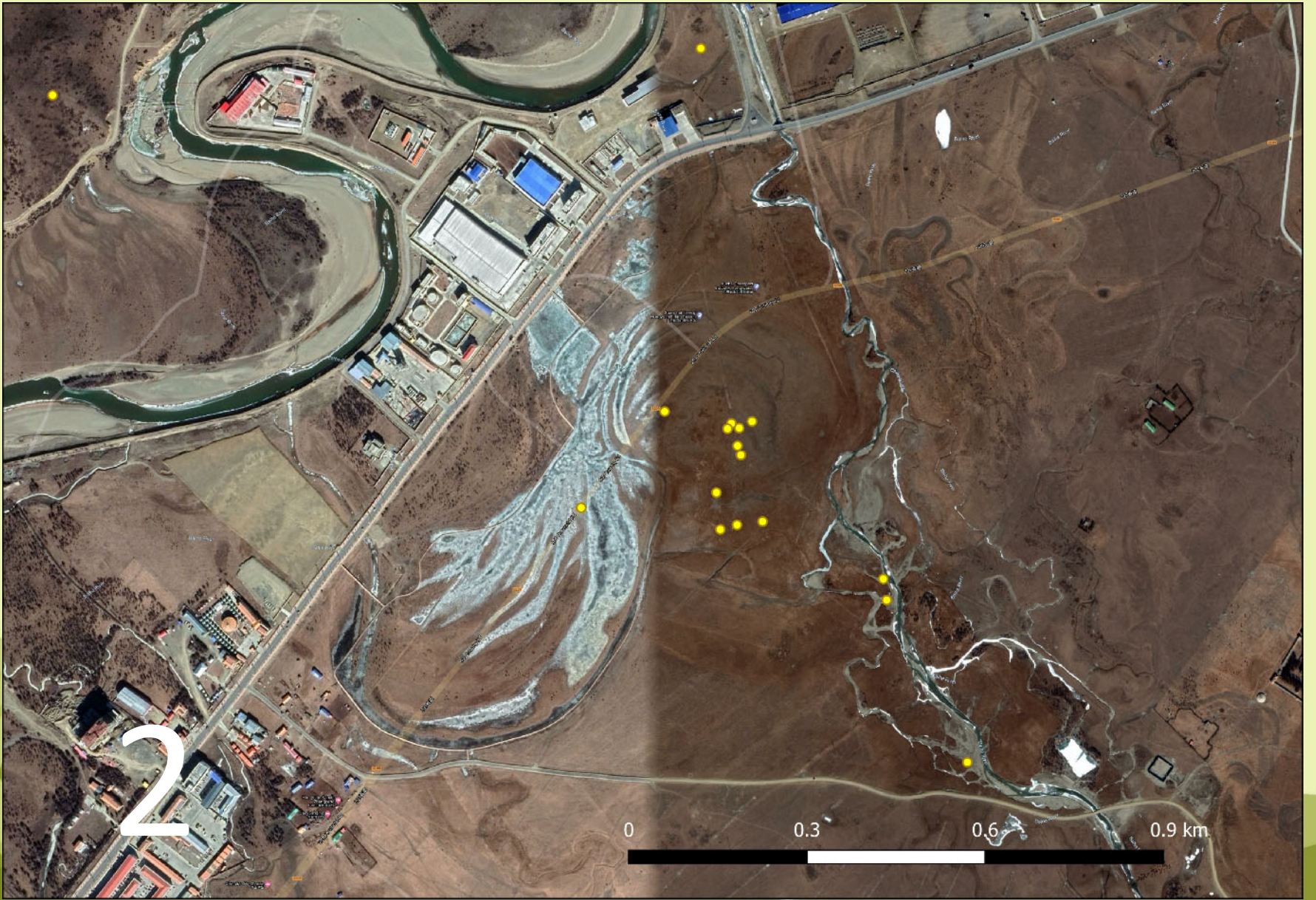
# SVNET157 Wintering

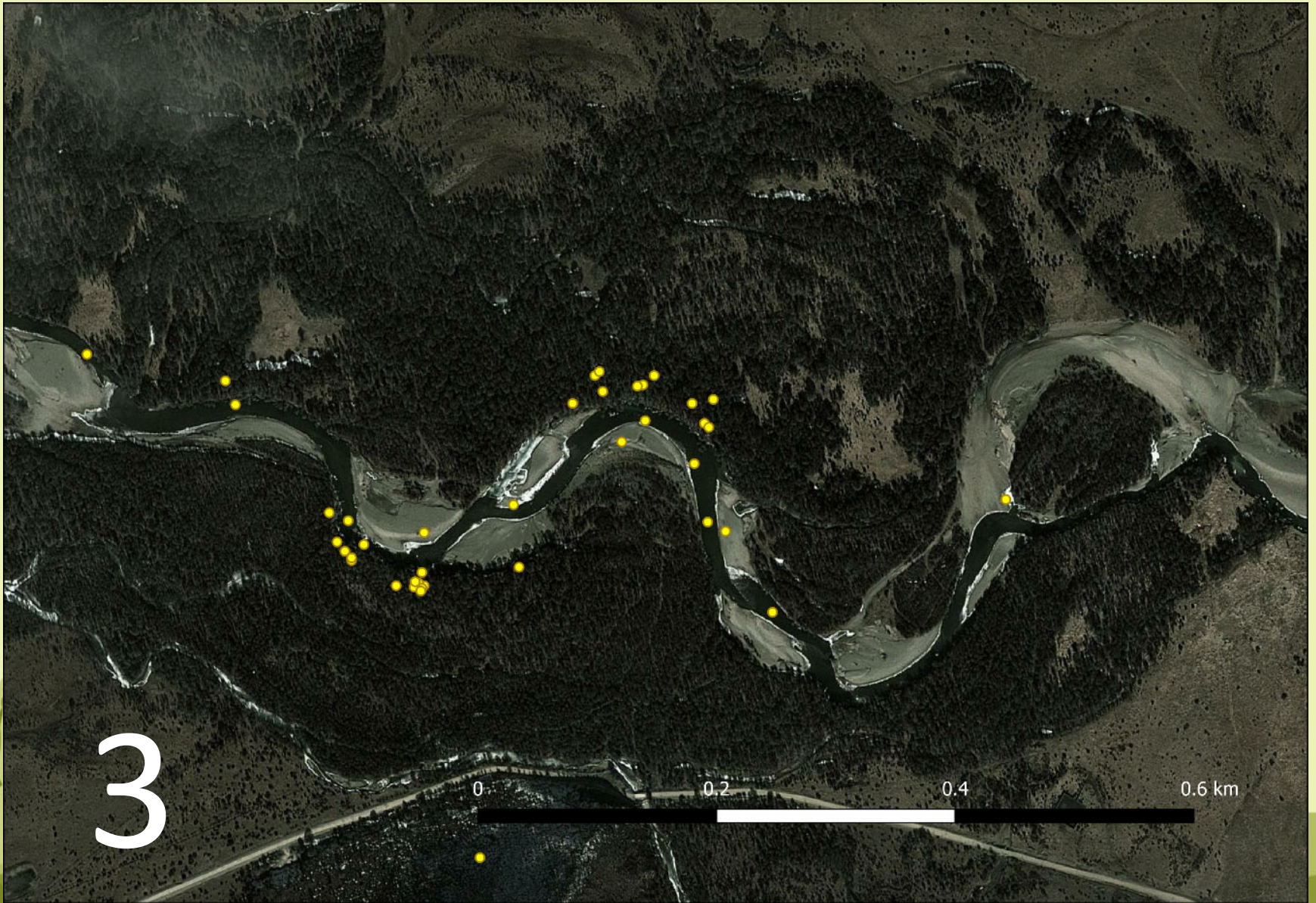


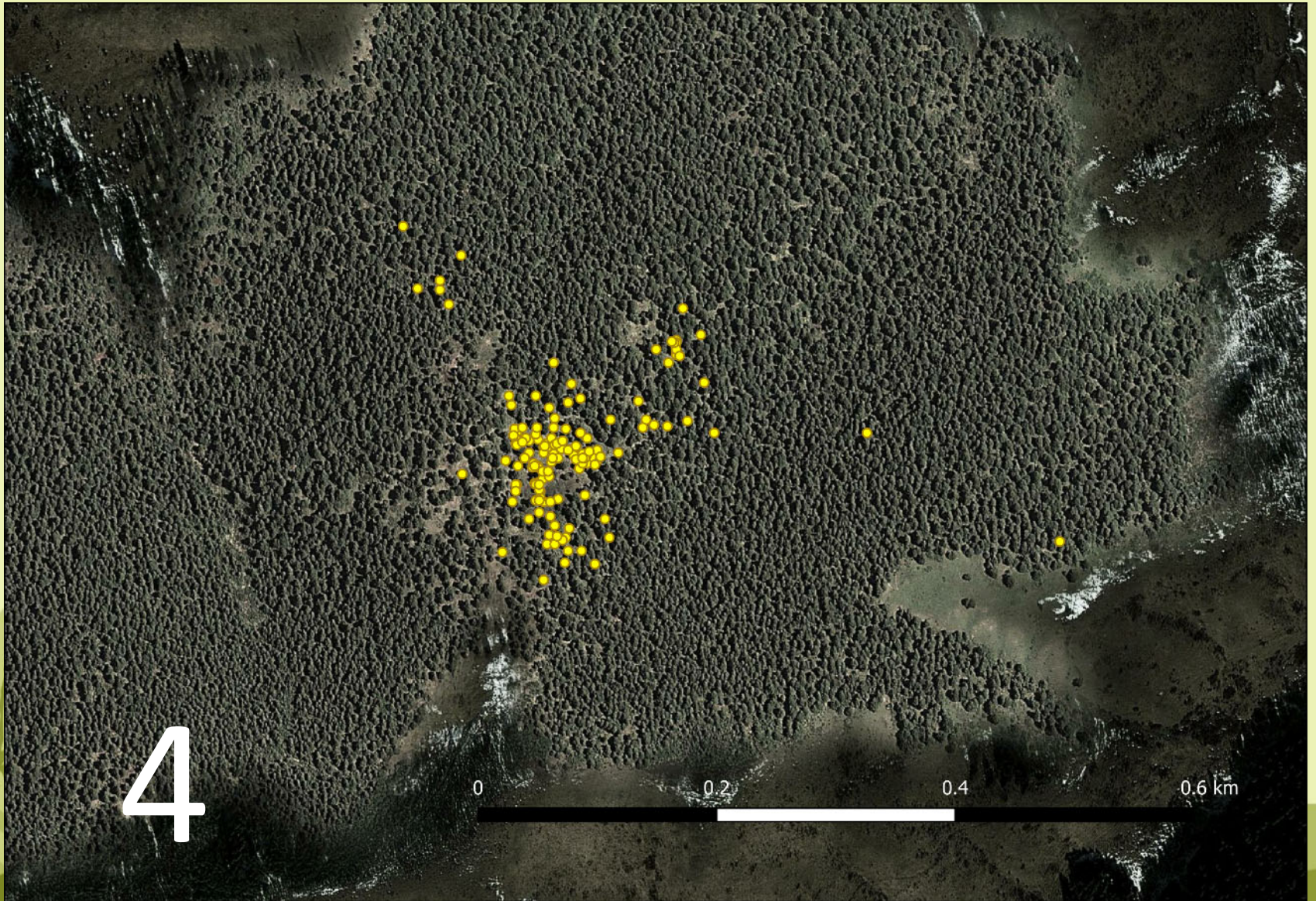


**SVNET156 Wintering sites**



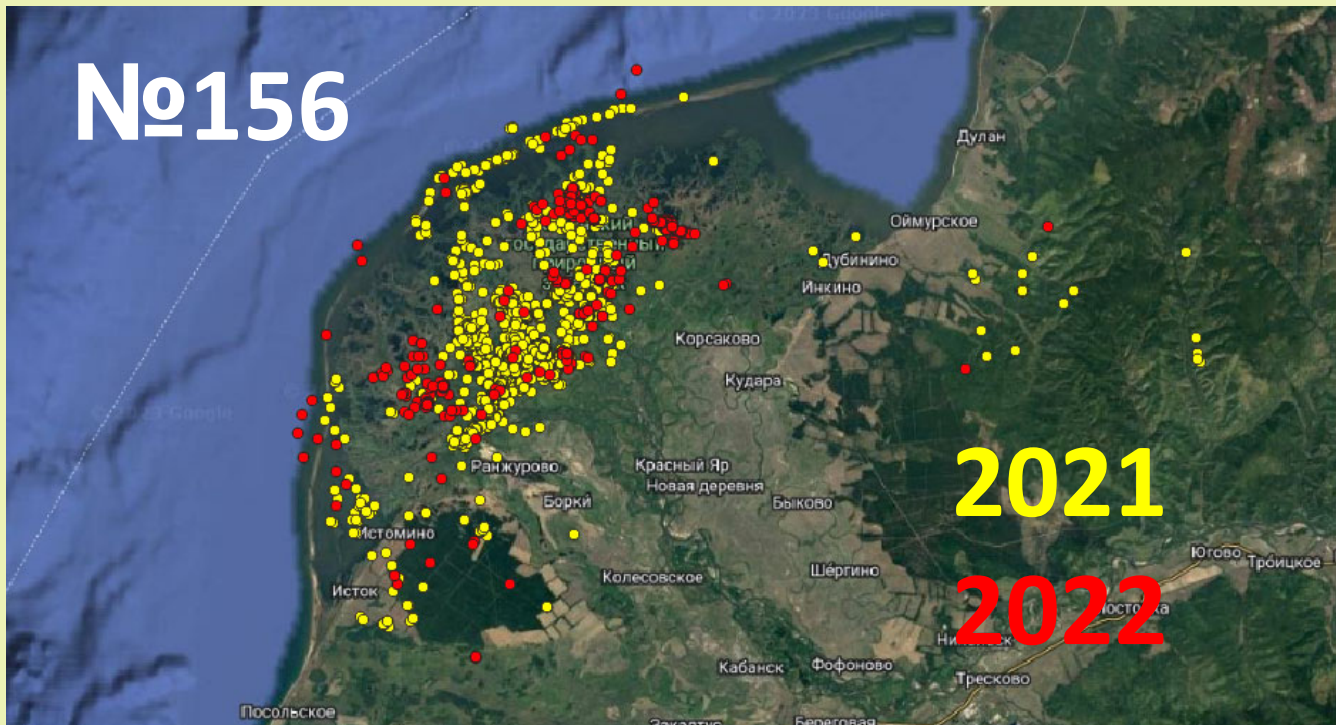




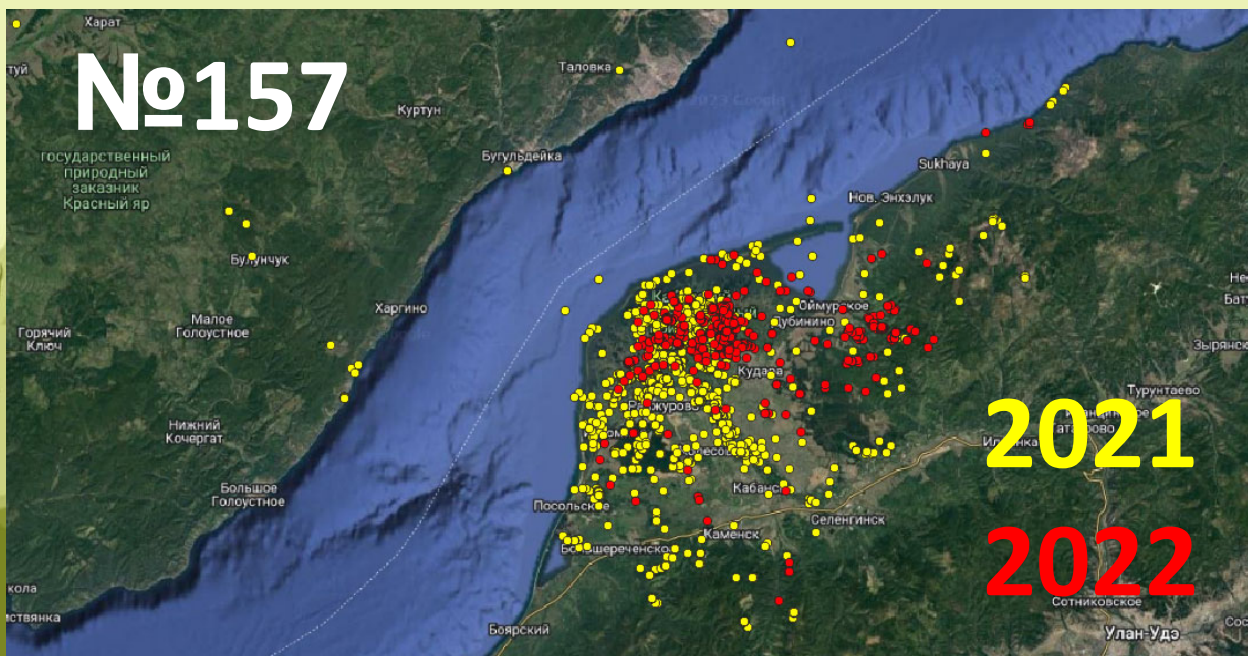




# №156



# №157



Summering area  
SVNET156

2021 – 236,7 sq.km

2022 – 105,4 sq.km

SVNET157

2021 – 675,8 sq.km

2022 – 120 sq.km

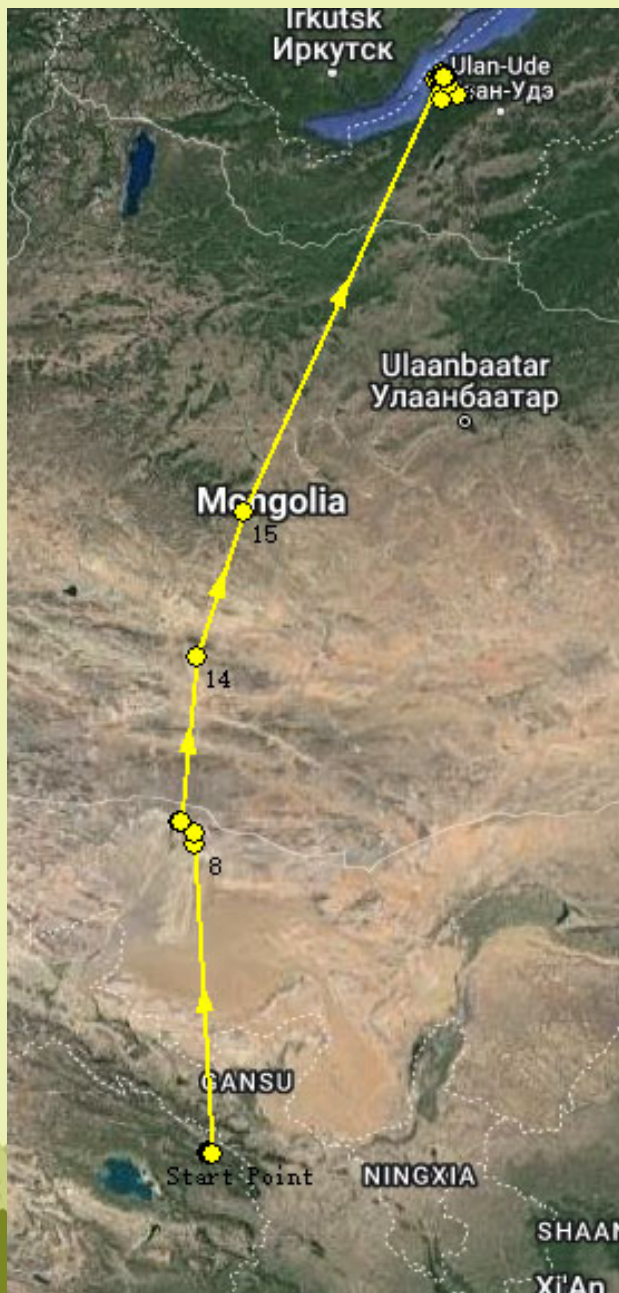
# Main parameters of fall migration (average)

Tracker	Track length (km)	Duration of migration (days)	Migration speed (km per day)	Stops, % of all migration time	Number of stops
SVNET156	2489,2	19	129,4	72%	12
SVNET157	2470	16,5	129,71	68%	19
SVNET158	2934,5	56	52,28	85%	19
Average ( <u>without SVNET158</u> )	<b>2579,20 (<u>2401,53</u>)</b>	<b>31,3 (<u>19</u>)</b>	<b>101,15 (<u>125,58</u>)</b>	<b>75% (<u>70%</u>)</b>	<b>16,6 (<u>15,5</u>)</b>

# Main parameters of spring migration (average)

Tracker	Track length (km)	Duration of migration (days)	Migration speed (km per day)	Stops, % of all migration time	Number of stops
SVNET156	3153,48	28,7	109,6	86,5%	16,5
SVNET157	2348,78	13,04	63,64	69,5%	11,5
Average	<b>2774,01</b>	<b>32,5</b>	<b>86,61844</b>	<b>78%</b>	<b>14</b>

# Transmitters in 2023



- **SVNET157 Stopped responding 27.02.2023 during wintering**
- **On 31.08.2023 a package of data arrived with eagle's whereabouts during missing period.**
- **In total it contained 63 records in March, April, May, June, July and August.**
- **The bird is alive and active, issues with data collection and sending is due to transmitter malfunction.**
- **Last seen 31.08.2023 on Selenga River delta**

**Thank you**



Φoto: Christoph Mueller